

Recombinant Human TINAGL1 Protein (His Tag)

Catalog Number: PKSH033159

Note: Centrifuge before opening to ensure complete recovery of vial contents.

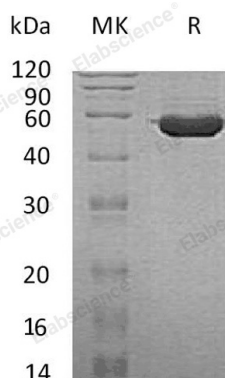
Description

Species	Human
Source	HEK293 Cells-derived Human TINAGL1 protein Ala22-His467, with an C-terminal His
Calculated MW	51.1 kDa
Observed MW	55-60 kDa
Accession	Q9GZM7
Bio-activity	Not validated for activity

Properties

Purity	> 95 % as determined by reducing SDS-PAGE.
Concentration	Subject to label value.
Endotoxin	< 1.0 EU per µg of the protein as determined by the LAL method.
Storage	Store at < -20°C, stable for 6 months. Please minimize freeze-thaw cycles.
Shipping	This product is provided as liquid. It is shipped at frozen temperature with blue ice/ gel packs. Upon receipt, store it immediately at < - 20°C.
Formulation	Supplied as a 0.2 µm filtered solution of 20mM Tris-HCl, 150mM NaCl, 10% Glycerol, 0.05% Brij35, pH 7.5.

Data



> 95 % as determined by reducing SDS-PAGE.

Background

TINAGL1 is a secreted protein and contains one SMB (somatomedin-B) domain. TINAGL1 is expressed in aorta, lymph nodes, heart, bone marrow, placenta, lung, kidney, skeletal muscle, pancreas, thyroid, adrenal gland and so on. TINAGL1 may be implicated in the adrenocortical zonation and in mechanisms for repressing the CYP11B1 gene expression in adrenocortical cells.

For Research Use Only