

## Recombinant MLLT6 Monoclonal Antibody

catalog number: **AN301216L**

**Note:** Centrifuge before opening to ensure complete recovery of vial contents.

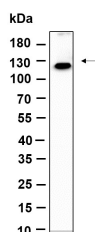
### Description

<b>Reactivity</b>	Human;Mouse;Rat
<b>Immunogen</b>	Recombinant Human MLLT6 protein
<b>Host</b>	Rabbit
<b>Isotype</b>	IgG, $\kappa$
<b>Clone</b>	4B3
<b>Purification</b>	Protein A
<b>Buffer</b>	PBS, 50% glycerol, 0.05% Proclin 300, 0.05% protein protectant.

### Applications Recommended Dilution

<b>WB</b>	1:1000-1:5000
-----------	---------------

### Data



Western Blot with Recombinant MLLT6 Monoclonal Antibody  
at dilution of 1:1000 dilution. Lane A: NIH/3T3 lysate.

**Observed-MW:120 kDa**

**Calculated-MW:120 kDa**

### Preparation & Storage

<b>Storage</b>	Store at -20°C Valid for 12 months. Avoid freeze / thaw cycles.
<b>Shipping</b>	Ice bag

### Background

Enables histone binding activity and nucleosome binding activity. Predicted to be involved in regulation of transcription by RNA polymerase II. Predicted to act upstream of or within several processes, including renal potassium excretion; renal sodium excretion; and renal water absorption. Predicted to be active in nucleus.

### For Research Use Only

Toll-free: 1-888-852-8623  
Web: [www.elabscience.com](http://www.elabscience.com)

Tel: 1-832-243-6086  
Email: [techsupport@elabscience.com](mailto:techsupport@elabscience.com)

Fax: 1-832-243-6017

Rev. V1.0