

## Recombinant Human FGFR1 protein (His Tag)

Catalog Number: PDEH101055

**Note:** Centrifuge before opening to ensure complete recovery of vial contents.

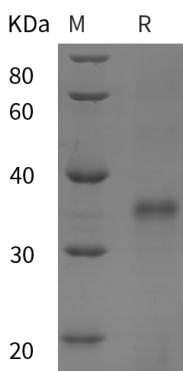
### Description

<b>Species</b>	Human
<b>Source</b>	E.coli-derived Human FGFR1 protein Met31-Lys360, with an C-terminal His
<b>Calculated MW</b>	36.2 kDa
<b>Observed MW</b>	35 kDa
<b>Accession</b>	Q8N441
<b>Bio-activity</b>	Not validated for activity

### Properties

<b>Purity</b>	> 95% as determined by reducing SDS-PAGE.
<b>Endotoxin</b>	< 10 EU/mg of the protein as determined by the LAL method
<b>Storage</b>	Generally, lyophilized proteins are stable for up to 12 months when stored at -20 to -80 °C. Reconstituted protein solution can be stored at 4-8°C for 2-7 days. Aliquots of reconstituted samples are stable at < -20°C for 3 months.
<b>Shipping</b>	This product is provided as lyophilized powder which is shipped with ice packs.
<b>Formulation</b>	Lyophilized from a 0.2 µm filtered solution in PBS with 5% Trehalose and 5% Mannitol.
<b>Reconstitution</b>	It is recommended that sterile water be added to the vial to prepare a stock solution of 0.5 mg/mL. Concentration is measured by UV-Vis.

### Data



> 95 % as determined by reducing SDS-PAGE.

### Background

Fibroblast Growth Factor Receptor-Like 1 (FGFR1) is a single-pass type I membrane protein that belongs to the FGF receptor family. The mature human FGFR1 consists of a 354 amino acid extracellular domain (ECD) with 3 Ig-like C2-type domains, a 21 amino acid transmembrane segment, and a 134 amino acid cytoplasmic domain. FGFR1 expressed in various tissues, preferentially in cartilaginous tissues and pancreas. It highly expressed in the liver, kidney, heart, brain and skeletal muscle, weakly expressed in the lung, small intestine and spleen. FGFR1 has a negative effect on cell proliferation.

### For Research Use Only