

## EED Polyclonal Antibody

**catalog number: E-AB-92642**

**Note:** Centrifuge before opening to ensure complete recovery of vial contents.

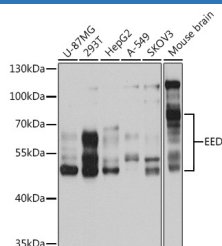
### Description

<b>Reactivity</b>	Human;Mouse;Rat
<b>Immunogen</b>	Recombinant fusion protein of human EED
<b>Host</b>	Rabbit
<b>Isotype</b>	IgG
<b>Purification</b>	Affinity purification
<b>Buffer</b>	Phosphate buffered solution, pH 7.4, containing 0.05% stabilizer and 50% glycerol.

### Applications

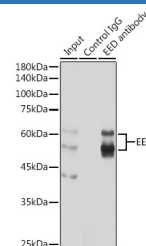
<b>WB</b>	1:500-1:2000
<b>IP</b>	1:50-1:200

### Data



Western blot analysis of extracts of various cell lines using EED Polyclonal Antibody at 1:1000 dilution.

**Observed-MW:50-70 kDa**  
**Calculated-MW:45 kDa/50 kDa/53 kDa**



Immunoprecipitation analysis of 300ug extracts of HeLa cells using 3ug EED Polyclonal Antibody. Western blot was performed from the immunoprecipitate using EED Polyclonal Antibody at a dilution of 1:1000.

**Observed-MW:50-70 kDa**  
**Calculated-MW:45 kDa/50 kDa/53 kDa**

### Preparation & Storage

<b>Storage</b>	Store at -20°C Valid for 12 months. Avoid freeze / thaw cycles.
<b>Shipping</b>	The product is shipped with ice pack, upon receipt, store it immediately at the temperature recommended.

### Background

This gene encodes a member of the Polycomb-group (PcG) family. PcG family members form multimeric protein complexes, which are involved in maintaining the transcriptional repressive state of genes over successive cell generations. This protein interacts with enhancer of zeste 2, the cytoplasmic tail of integrin beta7, immunodeficiency virus type 1 (HIV-1) MA protein, and histone deacetylase proteins. This protein mediates repression of gene activity through histone deacetylation, and may act as a specific regulator of integrin function. Two transcript variants encoding distinct isoforms have been identified for this gene.

### For Research Use Only