

Recombinant EGFR Monoclonal Antibody

catalog number: **E-AB-81439**

Note: Centrifuge before opening to ensure complete recovery of vial contents.

Description

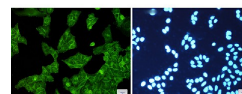
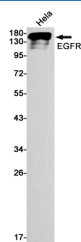
Reactivity	Human;Mouse
Immunogen	A synthetic peptide of human EGFR
Host	Rabbit
Isotype	IgG
Clone	R03-6B1
Purification	Affinity Purified
Buffer	50mM Tris-Glycine(pH 7.4), 0.15M NaCl, 40% Glycerol, 0.05% stabilizer and 0.05% protective protein.

Applications

Recommended Dilution

WB	1:1000-1:2000
IF	1:50-1:200

Data



Western blot detection of EGFR in Hela cell lysates using EGFR Rabbit mAb(1:1000 diluted). Predicted band size: 134kDa. Observed band size: 175kDa.

Immunofluorescence of EGFR(green) in Hela cells using EGFR Rabbit mAb at dilution 1:200, and DAPI(blue)

Observed-MW:175 kDa

Calculated-MW:134 kDa

Preparation & Storage

Storage	Store at -20°C Valid for 12 months. Avoid freeze / thaw cycles.
Shipping	The product is shipped with ice pack, upon receipt, store it immediately at the temperature recommended.

Background

EGFR, also named as ERBB1, is a cell-surface receptor for members of the epidermal growth factor family (EGF-family) of extracellular protein ligands. Binding of the protein to a ligand induces receptor dimerization and tyrosine autophosphorylation and leads to cell proliferation. The gene resides on chromosome 7p12, encoding a 170 kDa membrane-associated glycoprotein. Recent studies have shown EGFR plays a critical role in cancer development and progression, including cell proliferation, apoptosis, angiogenesis, and metastatic spread. Mutations in this gene are associated with lung cancer.

For Research Use Only