

Recombinant Human KEL/CD238 Protein (His Tag)

Catalog Number: PKSH032671

Note: Centrifuge before opening to ensure complete recovery of vial contents.

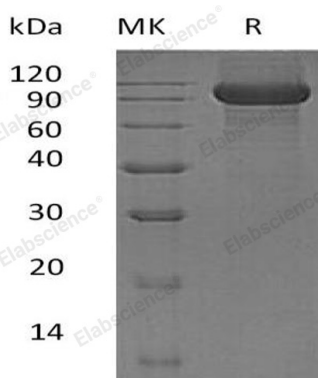
Description

Species	Human
Source	HEK293 Cells-derived Human KEL;CD238 protein Asn68-Trp732, with an C-terminal His
Calculated MW	76.4 kDa
Observed MW	85-120 kDa
Accession	P23276
Bio-activity	Not validated for activity

Properties

Purity	> 95 % as determined by reducing SDS-PAGE.
Concentration	Subject to label value.
Endotoxin	< 1.0 EU per µg of the protein as determined by the LAL method.
Storage	Store at < -20°C, stable for 6 months. Please minimize freeze-thaw cycles.
Shipping	This product is provided as liquid. It is shipped at frozen temperature with blue ice/gel packs. Upon receipt, store it immediately at < - 20°C.
Formulation	Supplied as a 0.2 µm filtered solution of 20mM PB, 150mM NaCl, pH 7.4.

Data



> 95 % as determined by reducing SDS-PAGE.

Background

Kell blood group glycoprotein (KEL) is a single-pass type II membrane protein which belongs to the peptidase M13 family. It is expressed in Expressed at high levels in erythrocytes and testis, and, at lower levels, in skeletal muscle, tonsils, lymph node, spleen and appendix. KEL has been shown zinc endopeptidase with endothelin-3-converting enzyme activity. It cleaves EDN1, EDN2 and EDN3, with a marked preference for EDN3. It links via a single disulfide bond to the XK membrane protein that carries the Kx antigen.

For Research Use Only