

## DYNC1LI2 Polyclonal Antibody

**catalog number: E-AB-92302**

**Note:** Centrifuge before opening to ensure complete recovery of vial contents.

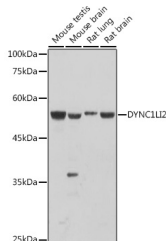
### Description

<b>Reactivity</b>	Human;Mouse;Rat
<b>Immunogen</b>	Recombinant fusion protein of human DYNC1LI2
<b>Host</b>	Rabbit
<b>Isotype</b>	IgG
<b>Purification</b>	Affinity purification
<b>Buffer</b>	Phosphate buffered solution, pH 7.4, containing 0.05% stabilizer and 50% glycerol.

### Applications

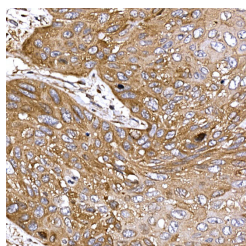
<b>WB</b>	1:500-1:2000
<b>IHC</b>	1:50-1:200

### Data

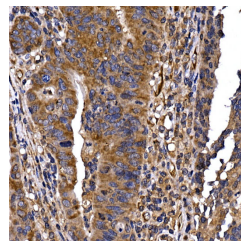
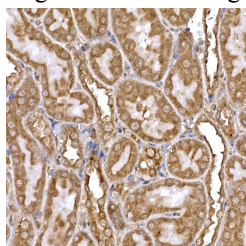


Western blot analysis of extracts of various cell lines using DYNC1LI2 Polyclonal Antibody at 1:1000 dilution.

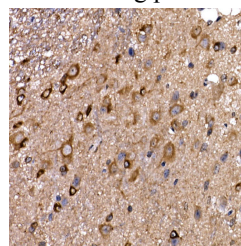
**Observed-MW:54 kDa**  
**Calculated-MW:54 kDa**



Immunohistochemistry of paraffin-embedded human esophageal cancer using DYNC1LI2 Polyclonal Antibody at dilution of 1:20 (40x lens). Perform high pressure antigen retrieval with 10 mM citrate buffer pH 6.0 before commencing with IHC staining protocol.



Immunohistochemistry of paraffin-embedded human colon carcinoma using DYNC1LI2 Polyclonal Antibody at dilution of 1:20 (40x lens). Perform high pressure antigen retrieval with 10 mM citrate buffer pH 6.0 before commencing with IHC staining protocol.



Immunohistochemistry of paraffin-embedded mouse spinal cord using DYNC1LI2 Polyclonal Antibody at dilution of 1:20 (40x lens). Perform high pressure antigen retrieval with 10 mM citrate buffer pH 6.0 before commencing with IHC staining protocol.

### For Research Use Only

Immunohistochemistry of paraffin-embedded rat kidney using DYNC1LI2 Polyclonal Antibody at dilution of 1:20 (40x lens). Perform high pressure antigen retrieval with 10 mM citrate buffer pH 6.0 before commencing with IHC staining protocol.

## Preparation & Storage

**Storage**

Store at -20°C Valid for 12 months. Avoid freeze / thaw cycles.

**Shipping**

The product is shipped with ice pack, upon receipt, store it immediately at the temperature recommended.

## Background

Cytoplasmic dynein is a microtubule-associated motor protein (Hughes et al., 1995 [PubMed 7738094]). See DYNC1H1 (MIM 600112) for general information about dyneins.

## For Research Use Only