

## Recombinant Galectin 3 Monoclonal Antibody

catalog number: **E-AB-81559**

**Note:** Centrifuge before opening to ensure complete recovery of vial contents.

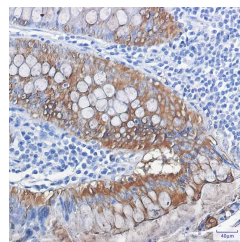
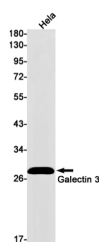
### Description

<b>Reactivity</b>	Human
<b>Immunogen</b>	Recombinant protein of human Galectin 3
<b>Host</b>	Rabbit
<b>Isotype</b>	IgG
<b>Clone</b>	R01-5E1
<b>Purification</b>	Affinity Purified
<b>Buffer</b>	50mM Tris-Glycine(pH 7.4), 0.15M NaCl, 40% Glycerol, 0.05% stabilizer and 0.05% protective protein.

### Applications

Applications	Recommended Dilution
<b>WB</b>	1:500-1:1000
<b>IHC</b>	1:100-1:200
<b>IF</b>	1:50-1:100

### Data



Western blot detection of Galectin 3 in Hela cell lysates using Galectin 3 Rabbit mAb(1:1000 diluted). Predicted band size:26kDa. Observed band size:28kDa.

Immunohistochemistry of Galectin 3 in paraffin-embedded Human colon cancer tissue using Galectin 3 Rabbit mAb at dilution 1:100

**Observed-MW:28 kDa**

**Calculated-MW:26 kDa**

### Preparation & Storage

<b>Storage</b>	Store at -20°C Valid for 12 months. Avoid freeze / thaw cycles.
<b>Shipping</b>	The product is shipped with ice pack, upon receipt, store it immediately at the temperature recommended.

### Background

Galectins are a family of animal lectins defined by shared characteristic amino-acid sequences and affinity for  $\beta$ -galactose-containing oligosaccharides. Galectin-3 contains one carbohydrate recognition domain (CRD) and a proline- and glycine-rich N-terminal domain through which is able to form oligomers. Galectin-3 is widely expressed in many normal tissues and a variety of tumors. It is found intracellularly in nucleus and cytoplasm or secreted outside of cell, being present on the cell surface or in the extracellular space. Galectin-3 is involved in various biological processes including cell growth, adhesion, differentiation, apoptosis, angiogenesis, immune response, neoplastic transformation and metastasis.

### For Research Use Only