

## Recombinant Human GLP1R Protein (Fc Tag)

**Catalog Number:** PKSH033669

**Note:** Centrifuge before opening to ensure complete recovery of vial contents.

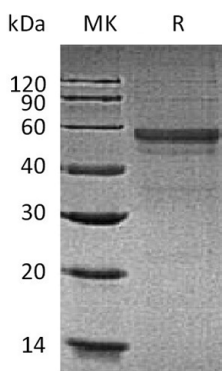
### Description

<b>Species</b>	Human
<b>Source</b>	HEK293 Cells-derived Human GLP1R protein Arg24-Tyr145, with an C-terminal Fc
<b>Calculated MW</b>	41.2 kDa
<b>Observed MW</b>	50-75 kDa
<b>Accession</b>	P43220
<b>Bio-activity</b>	Not validated for activity

### Properties

<b>Purity</b>	> 90 % as determined by reducing SDS-PAGE.
<b>Endotoxin</b>	< 1.0 EU per µg of the protein as determined by the LAL method.
<b>Storage</b>	Generally, lyophilized proteins are stable for up to 12 months when stored at -20 to -80 °C. Reconstituted protein solution can be stored at 4-8°C for 2-7 days. Aliquots of reconstituted samples are stable at < -20°C for 3 months.
<b>Shipping</b>	This product is provided as lyophilized powder which is shipped with ice packs.
<b>Formulation</b>	Lyophilized from a 0.2 µm filtered solution of PBS, pH 7.4. Normally 5% - 8% trehalose, mannitol and 0.01% Tween 80 are added as protectants before lyophilization. Please refer to the specific buffer information in the printed manual.
<b>Reconstitution</b>	Please refer to the printed manual for detailed information.

### Data



> 90 % as determined by reducing SDS-PAGE.

### Background

GLP1R belongs to the G-protein coupled receptor 2 family that is synthesized as a 172 amino acid (aa). GLP1R is expressed in pancreas, lung, heart, kidney, hypothalamus, and stomach. It may form homodimers and heterodimers with GIPR. GLP1R is a receptor for glucagon-like peptide 1. The activity of this receptor is mediated by G proteins which activate adenylyl cyclase.