

GLP2R Polyclonal Antibody

catalog number: **E-AB-16967**

Note: Centrifuge before opening to ensure complete recovery of vial contents.

Description

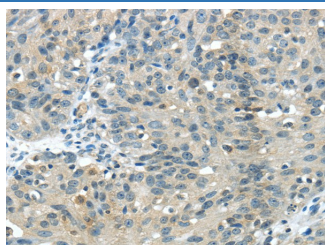
Reactivity	Human;Mouse
Immunogen	Fusion protein of human GLP2R
Host	Rabbit
Isotype	IgG
Purification	Affinity purification
Buffer	Phosphate buffered solution, pH 7.4, containing 0.05% stabilizer and 50% glycerol.

Applications

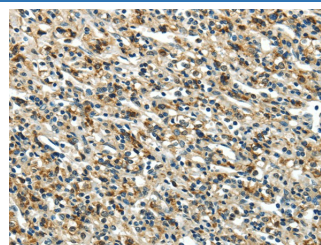
Recommended Dilution

IHC	1:25-100
------------	----------

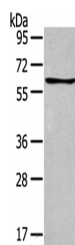
Data



Immunohistochemistry of paraffin-embedded Human breast cancer using GLP2R Polyclonal Antibody at dilution of 1/30



Immunohistochemistry of paraffin-embedded Human prostate cancer using GLP2R Polyclonal Antibody at dilution of 1/30



Western Blot analysis of Jurkat cells using GLP2R Polyclonal Antibody at dilution of 1:400

Calculated-MW:63 kDa

Preparation & Storage

Storage	Store at -20°C Valid for 12 months. Avoid freeze / thaw cycles.
Shipping	The product is shipped with ice pack, upon receipt, store it immediately at the temperature recommended.

Background

This gene encodes a G protein-coupled receptor that is closely related to the glucagon receptor and binds to glucagon-like peptide-2 (GLP2). Signalling through GLP2 stimulates intestinal growth and increases villus height in the small intestine, concomitant with increased crypt cell proliferation and decreased enterocyte apoptosis.

For Research Use Only