

Recombinant PDPK1 Monoclonal Antibody

catalog number: **AN300667L**

Note: Centrifuge before opening to ensure complete recovery of vial contents.

Description

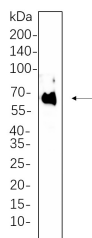
Reactivity	Human;Mouse;Rat
Immunogen	Recombinant Human PDPK1 protein
Host	Rabbit
Isotype	IgG, κ
Clone	2C5
Purification	Protein A
Buffer	PBS, 50% glycerol, 0.05% Proclin 300, 0.05% protein protectant.

Applications

Recommended Dilution

WB	1:2000-1:10000
-----------	----------------

Data



Western Blot with Recombinant PDPK1 Monoclonal Antibody at dilution of 1:1000 dilution. Lane A: HeLa whole cell lysate.

Observed-MW:58-68 kDa

Calculated-MW:63 kDa

Preparation & Storage

Storage	Store at -20°C Valid for 12 months. Avoid freeze / thaw cycles.
Shipping	Ice bag

Background

ATP + a protein = ADP + a phosphoprotein. Phosphorylates and activates not only PKB/AKT, but also PKA, PKC-zeta, RPS6KA1 and RPS6KB1. May play a general role in signaling processes and in development (By similarity). Isoform 3 is catalytically inactive. PTM: Phosphorylated on tyrosine and serine/threonine. Phosphorylation on Ser-241 in the activation loop is required for full activity. PDK1 itself can autophosphorylate Ser-241, leading to its own activation. similarity: Belongs to the protein kinase superfamily. similarity: Belongs to the protein kinase superfamily. AGC Ser/Thr protein kinase family. PDK1 subfamily. similarity: Contains 1 PH domain. similarity: Contains 1 protein kinase domain. subcellular location: Membrane-associated after cell stimulation leading to its translocation. Tyrosine phosphorylation seems to occur only at the plasma membrane. subunit: Interacts with TUSC4. tissue specificity: Appears to be expressed ubiquitously.

For Research Use Only

Toll-free: 1-888-852-8623
Web: www.elabscience.com

Tel: 1-832-243-6086
Email: techsupport@elabscience.com

Fax: 1-832-243-6017

Rev. V1.0