

## SETD3 Polyclonal Antibody

**catalog number: E-AB-92418**

**Note:** Centrifuge before opening to ensure complete recovery of vial contents.

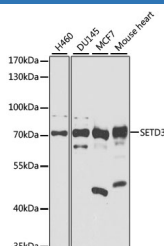
### Description

<b>Reactivity</b>	Human
<b>Immunogen</b>	A synthetic peptide of human SETD3
<b>Host</b>	Rabbit
<b>Isotype</b>	IgG
<b>Purification</b>	Affinity purification
<b>Buffer</b>	Phosphate buffered solution, pH 7.4, containing 0.05% stabilizer and 50% glycerol.

### Applications

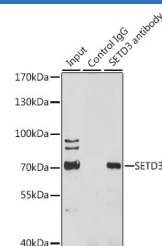
<b>WB</b>	1:500-1:2000
<b>IP</b>	50-1:200

### Data



Western blot analysis of extracts of various cell lines using SETD3 Polyclonal Antibody at 1:1000 dilution.

**Observed-MW:Refer to figures**  
**Calculated-MW:32 kDa/33 kDa/67 kDa**



Immunoprecipitation analysis of 200ug extracts of HeLa cells using 3 ug SETD3 Polyclonal Antibody. Western blot was performed from the immunoprecipitate using SETD3 Polyclonal Antibody at a dilution of 1:1000.

**Observed-MW:Refer to figures**  
**Calculated-MW:32 kDa/33 kDa/67 kDa**

### Preparation & Storage

<b>Storage</b>	Store at -20°C Valid for 12 months. Avoid freeze / thaw cycles.
<b>Shipping</b>	The product is shipped with ice pack, upon receipt, store it immediately at the temperature recommended.

### Background

Protein-histidine N-methyltransferase that specifically mediates 3-methylhistidine (tele-methylhistidine) methylation of actin at 'His-73'. Histidine methylation of actin is required for smooth muscle contraction of the laboring uterus during delivery. Does not have protein-lysine N-methyltransferase activity and probably only catalyzes histidine methylation of actin.

### For Research Use Only