

E-Cadherin Monoclonal Antibody

catalog number: E-AB-70249

Note: Centrifuge before opening to ensure complete recovery of vial contents.

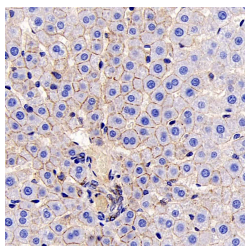
Description

Reactivity	Mouse;Rat
Immunogen	Recombinant protein corresponding to MouseE-cadherin
Host	Mouse
Isotype	IgG
Clone	EC125D
Purification	Affinity purification
Buffer	Phosphate buffered solution, pH 7.4, containing 0.05% stabilizer, 1% protein protectant and 50% glycerol.

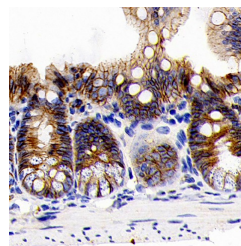
Applications Recommended Dilution

IHC	1:200-1:800
------------	-------------

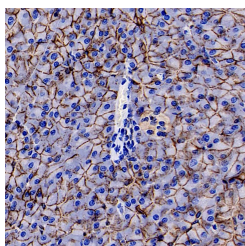
Data



Immunohistochemistry analysis of paraffin-embedded mouse liver using E-Cadherin Monoclonal Antibody at dilution of 1:300.



Immunohistochemistry analysis of paraffin-embedded rat colon using E-Cadherin Monoclonal Antibody at dilution of 1:300.



Immunohistochemistry analysis of paraffin-embedded rat pancreas using E-Cadherin Monoclonal Antibody at dilution of 1:300.

Preparation & Storage

Storage	Store at -20°C Valid for 12 months. Avoid freeze / thaw cycles.
Shipping	The product is shipped with ice pack, upon receipt, store it immediately at the temperature recommended.

Background

For Research Use Only

This gene is a classical cadherin from the cadherin superfamily. The encoded protein is a calcium dependent cell-cell adhesion glycoprotein comprised of five extracellular cadherin repeats, a transmembrane region and a highly conserved cytoplasmic tail. Mutations in this gene are correlated with gastric, breast, colorectal, thyroid and ovarian cancer. Loss of function is thought to contribute to progression in cancer by increasing proliferation, invasion, and/or metastasis. The ectodomain of this protein mediates bacterial adhesion to mammalian cells and the cytoplasmic domain is required for internalization. Identified transcript variants arise from mutation at consensus splice sites.

For Research Use Only

Toll-free: 1-888-852-8623
Web: www.elabscience.com

Tel: 1-832-243-6086
Email: techsupport@elabscience.com

Fax: 1-832-243-6017

Rev. V1.6