

## AF/LE Purified Anti-Human CD25 Antibody[7G7B6]

**catalog number:** AN007550

**Note:** Centrifuge before opening to ensure complete recovery of vial contents.

### Description

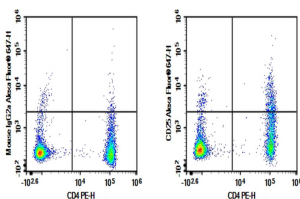
<b>Reactivity</b>	Human
<b>Immunogen</b>	Recombinant Human CD25 protein
<b>Host</b>	Mouse
<b>Isotype</b>	Mouse IgG2a, $\kappa$
<b>Clone</b>	7G7B6
<b>Purification</b>	>98%, Protein A/G purified
<b>Buffer</b>	Sterile PBS, pH 7.2. < 1.0 EU per mg of the antibody as determined by the LAL method

### Applications

### Recommended Dilution

<b>FCM</b>	2 $\mu$ g/mL ( $1 \times 10^5$ - $5 \times 10^5$ cells)
------------	---

### Data



Human peripheral blood lymphocytes cell were stained with 0.2  $\mu$ g AF/LE Purified Anti-Human CD25 Antibody[7G7B6] (Right) and 0.2  $\mu$ g Mouse IgG2a,  $\kappa$  Isotype Control (Left), followed by Alexa Fluor® 647-conjugated Goat Anti-Mouse IgG Secondary Antibody, then anti-Human CD4 PE-conjugated Monoclonal Antibody.

### Preparation & Storage

<b>Storage</b>	Store at 4°C valid for 12 months or -20°C valid for long term storage, avoid freeze / thaw cycles. This preparation contains no preservatives, thus it should be handled under aseptic conditions.
<b>Shipping</b>	Ice bag

### Background

The interleukin 2 (IL2) receptor alpha (IL2RA) and beta (IL2RB) chains, together with the common gamma chain (IL2RG), constitute the high-affinity IL2 receptor. Homodimeric alpha chains (IL2RA) result in low-affinity receptor, while homodimeric beta (IL2RB) chains produce a medium-affinity receptor. Normally an integral-membrane protein, soluble IL2RA has been isolated and determined to result from extracellular proteolysis. Alternately-spliced IL2RA mRNAs have been isolated, but the significance of each is presently unknown. Mutations in this gene are associated with interleukin 2 receptor alpha deficiency.

### For Research Use Only