

RFPL4 Polyclonal Antibody

catalog number: **E-AB-91390**

Note: Centrifuge before opening to ensure complete recovery of vial contents.

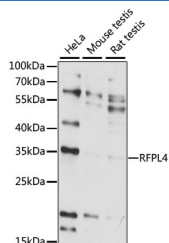
Description

Reactivity	Human;Mouse;Rat
Immunogen	A synthetic peptide of human RFPL4
Host	Rabbit
Isotype	IgG
Purification	Affinity purification
Buffer	Phosphate buffered solution, pH 7.4, containing 0.05% stabilizer and 50% glycerol.

Applications Recommended Dilution

WB	1:500-1:2000
-----------	--------------

Data



Western blot analysis of extracts of various cell lines using RFPL4 Polyclonal Antibody at 1:1000 dilution.

Observed-MV:32 kDa

Calculated-MV:32 kDa

Preparation & Storage

Storage	Store at -20°C Valid for 12 months. Avoid freeze / thaw cycles.
Shipping	The product is shipped with ice pack, upon receipt, store it immediately at the temperature recommended.

Background

Predicted to enable ubiquitin-protein transferase activity. Predicted to be involved in positive regulation of transcription, DNA-templated. Predicted to be located in nucleus. Predicted to be active in chromatin and nucleoplasm.

For Research Use Only