

## Recombinant Human CD160 Protein(His Tag)

Catalog Number: PDMH100041

**Note:** Centrifuge before opening to ensure complete recovery of vial contents.

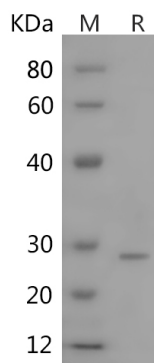
### Description

|                      |   |
|----------------------|---|
| <b>Species</b>       | Human   |
| <b>Source</b>        | Mammalian-derived Human CD160 protein Met1-Leu158, with an C-terminal His |
| <b>Calculated MW</b> | 14.9 kDa  |
| <b>Observed MW</b>   | 25 kDa  |
| <b>Accession</b>     | O95971  |
| <b>Bio-activity</b>  | Not validated for activity  |

### Properties

|                       |   |
|-----------------------|---|
| <b>Purity</b>         | > 90% as determined by reducing SDS-PAGE.   |
| <b>Endotoxin</b>      | < 1.0 EU/mg of the protein as determined by the LAL method  |
| <b>Storage</b>        | Generally, lyophilized proteins are stable for up to 12 months when stored at -20 to -80°C. Reconstituted protein solution can be stored at 4-8°C for 2-7 days. Aliquots of reconstituted samples are stable at < -20°C for 3 months. |
| <b>Shipping</b>       | This product is provided as lyophilized powder which is shipped with ice packs.   |
| <b>Formulation</b>    | Lyophilized from a 0.2 µm filtered solution in PBS with 5% Trehalose and 5% Mannitol.   |
| <b>Reconstitution</b> | It is recommended that sterile water be added to the vial to prepare a stock solution of 0.5 mg/mL. Concentration is measured by UV-Vis.  |

### Data



SDS-PAGE analysis of Human CD160 proteins, 2 µg/lane of Recombinant Human CD160 proteins was resolved with SDS-PAGE under reducing conditions, showing bands at 25 kDa.

### Background

#### For Research Use Only

Toll-free: 1-888-852-8623  
Web: [www.elabscience.com](http://www.elabscience.com)

Tel: 1-832-243-6086  
Email: [techsupport@elabscience.com](mailto:techsupport@elabscience.com)

Fax: 1-832-243-6017

CD16 antigen, also known as Natural killer cell receptor BY55 and CD16, is a cell membrane protein which contains one Ig-like V-type (immunoglobulin-like) domain. CD16 is a GPI-anchored lymphocyte surface receptor in which expression is mostly restricted to the highly cytotoxic CD56(dim)CD16(+) peripheral blood NK subset. CD16 is a receptor showing broad specificity for both classical and non-classical MHC class I molecules. CD16 is expressed in spleen, peripheral blood, and small intestine. Expression of CD16 is restricted to functional NK and T cytotoxic lymphocytes. CD16 acts as a co-activator receptor for CD3-induced proliferation of CD4+ CD16+ T cells isolated from inflammatory skin lesions. Unique CD4+ CD16+ lymphocyte subset may play a role in the pathogenesis of skin inflammation. Activated NK lymphocytes release a soluble form of CD16 that functionally impairs the MHC-I-specific cytotoxic CD8(+) T lymphocyte responsiveness.

## For Research Use Only

Toll-free: 1-888-852-8623  
Web: [www.elabscience.com](http://www.elabscience.com)

Tel: 1-832-243-6086  
Email: [techsupport@elabscience.com](mailto:techsupport@elabscience.com)

Fax: 1-832-243-6017