

## Recombinant Human GGACT Protein (His Tag)

Catalog Number: PKSH033272

**Note:** Centrifuge before opening to ensure complete recovery of vial contents.

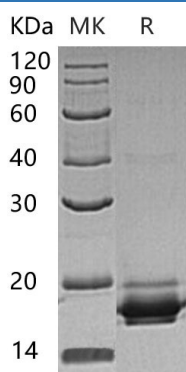
### Description

<b>Species</b>	Human
<b>Source</b>	E.coli-derived Human GGACT protein Met 1-Arg153, with an N-terminal His
<b>Calculated MW</b>	19.5 kDa
<b>Observed MW</b>	18 kDa
<b>Accession</b>	Q9BVM4
<b>Bio-activity</b>	Not validated for activity

### Properties

<b>Purity</b>	> 95 % as determined by reducing SDS-PAGE.
<b>Concentration</b>	Subject to label value.
<b>Endotoxin</b>	< 1.0 EU per µg of the protein as determined by the LAL method.
<b>Storage</b>	Store at < -20°C, stable for 6 months. Please minimize freeze-thaw cycles.
<b>Shipping</b>	This product is provided as liquid. It is shipped at frozen temperature with blue ice/gel packs. Upon receipt, store it immediately at < -20°C.
<b>Formulation</b>	Supplied as a 0.2 µm filtered solution of 20mM Tris-HCl, 100mM NaCl, 10% Glycerol, pH 8.0.

### Data



> 95 % as determined by reducing SDS-PAGE.

### Background

Gamma-Glutamylaminocyclotransferase is an enzyme that converts gamma-glutamylamines to free amines and 5-oxoproline which belongs to the gamma-glutamylcyclotransferase family. It shows high activity toward gamma-glutamyl-epsilon-lysine, derived from the breakdown of fibrin and contributes to degradation of proteins cross-linked by transglutaminases. It degrades the cross-link between a lysine and a glutamic acid residue from two proteins that have been cross-linked by transglutaminases. This protein adopts the newly identified cyclotransferase fold, observed in Gamma-Glutamylcyclotransferase, an enzyme with activity toward gamma-glutamyl-alpha-amino acids.