

Recombinant IGF1 Receptor Monoclonal Antibody

catalog number: **AN301096L**

Note: Centrifuge before opening to ensure complete recovery of vial contents.

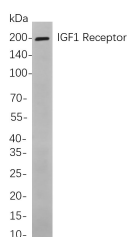
Description

Reactivity	Human
Immunogen	Recombinant Human IGF1 Receptor protein
Host	Rabbit
Isotype	IgG, κ
Clone	B851
Purification	Protein A
Buffer	PBS, 50% glycerol, 0.05% Proclin 300, 0.05% protein protectant.

Applications Recommended Dilution

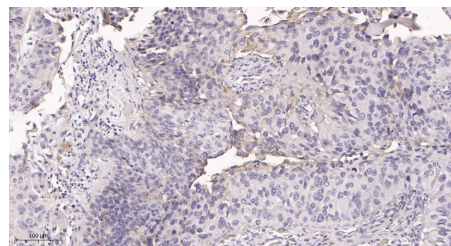
IHC	1:100-200
WB	1:1000-5000

Data



Western Blot with Recombinant IGF1 Receptor Monoclonal Antibody at dilution of 1:1000 dilution. Lane A: LoVo cells.

Observed-MW:200 kDa
Calculated-MW:154 kDa



Immunohistochemistry of paraffin-embedded human bladder carcinoma tissue using Recombinant IGF1 Receptor Monoclonal Antibody at dilution of 1:200.

Preparation & Storage

Storage	Store at -20°C Valid for 12 months. Avoid freeze / thaw cycles.
Shipping	Ice bag

Background

This receptor binds insulin-like growth factor with a high affinity. It has tyrosine kinase activity. The insulin-like growth factor I receptor plays a critical role in transformation events. Cleavage of the precursor generates alpha and beta subunits. It is highly overexpressed in most malignant tissues where it functions as an anti-apoptotic agent by enhancing cell survival. Alternatively spliced transcript variants encoding distinct isoforms have been found for this gene.

For Research Use Only

Toll-free: 1-888-852-8623
Web: www.elabscience.com

Tel: 1-832-243-6086
Email: techsupport@elabscience.com

Fax: 1-832-243-6017

Rev. V1.1