

## AF/LE Purified Anti-Mouse CD45RO/B220 Antibody[RA3-6B2]

catalog number: AN004280

**Note:** Centrifuge before opening to ensure complete recovery of vial contents.

### Description

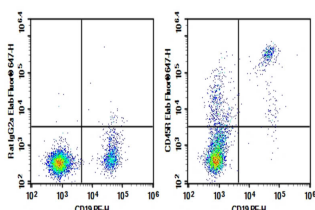
<b>Reactivity</b>	Mouse
<b>Immunogen</b>	Recombinant Mouse B220 protein
<b>Host</b>	Rat
<b>Isotype</b>	Rat IgG2a, $\kappa$
<b>Clone</b>	RA3-6B2
<b>Purification</b>	>98%, Protein A/G purified
<b>Buffer</b>	Sterile PBS, pH 7.2. < 1.0 EU per mg of the antibody as determined by the LAL method.

### Applications

### Recommended Dilution

<b>FCM</b>	2 $\mu\text{g/mL}$ ( $1 \times 10^5$ - $5 \times 10^5$ cells)
------------	---

### Data



C57/BL6 Mouse splenocytes were stained with 0.2  $\mu\text{g}$  AF/LE

Purified Anti-Mouse CD45RO/B220 Antibody[RA3-6B2]

(Right) and 0.2  $\mu\text{g}$  Rat IgG2a,  $\kappa$  Isotype Control (Left),

followed by Elab Fluor® 647-conjugated Goat Anti-Rat IgG  
Secondary Antibody, then anti-Mouse CD19 PE-conjugated

Monoclonal Antibody.

### Preparation & Storage

**Storage** Store at 4°C valid for 12 months or -20°C valid for long term storage, avoid freeze / thaw cycles. This preparation contains no preservatives, thus it should be handled under aseptic conditions.

**Shipping** Ice bag

### Background

CD45R, also known as B220, is an isoform of CD45. It is a member of the protein tyrosine phosphatase (PTP) family with a molecular weight of approximately 180-240 kD. CD45R is expressed on B cells (at all developmental stages from pro-B cells through mature B cells), activated B cells, and subsets of T and NK cells. CD45R (B220) is also expressed on a subset of abnormal T cells involved in the pathogenesis of systemic autoimmunity in MRL-Fas<sup>lpr</sup> and MRL-Fas<sup>gld</sup> mice. It plays a critical role in TCR and BCR signaling. The primary ligands for CD45 are galectin-1, CD 2, CD3, and CD4. CD45R is commonly used as a pan-B cell marker; however, CD19 may be more appropriate for B cell specificity.

### For Research Use Only

Toll-free: 1-888-852-8623  
Web: [www.elabscience.com](http://www.elabscience.com)

Tel: 1-832-243-6086  
Email: [techsupport@elabscience.com](mailto:techsupport@elabscience.com)

Fax: 1-832-243-6017

Rev. V1.0