

LMAN2/VIP36 Monoclonal Antibody

catalog number: AN200132P

Note: Centrifuge before opening to ensure complete recovery of vial contents.

Description

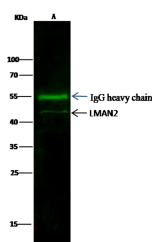
Reactivity	Human
Immunogen	Recombinant Human LMAN2 / VIP36 protein
Host	Mouse
Isotype	IgG2a
Clone	11A3
Purification	Protein A
Buffer	0.2 µm filtered solution in PBS

Applications

Recommended Dilution

WB	1:500-1:2000
IP	4-6 µL/mg of lysate

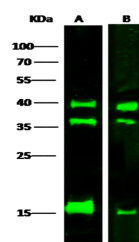
Data



Immunoprecipitation analysis using 2 µL anti-LMAN2-His mouse Monoclonal Antibody and 15 µl of 50 % Protein G agarose. Western blot was performed from the immunoprecipitate using LMAN2-His mouse Monoclonal Antibody at a dilution of 1:100. Lane A: 0.5 mg Hela Whole Cell Lysate

Observed-MW: 40 kDa

Calculated-MW: 40 kDa



Western Blot with LMAN2 / VIP36 Monoclonal Antibody at dilution of 1:500. Lane A: Jurkat Whole Cell Lysate, Lane B: Hela Whole Cell Lysate, Lysates/proteins at 30 µg per lane.

Observed-MW: 40 kDa

Calculated-MW: 40 kDa

Preparation & Storage

Storage	This antibody can be stored at 2°C-8°C for one month without detectable loss of activity. Antibody products are stable for twelve months from date of receipt when stored at -20°C to -80°C. Preservative-Free. Avoid repeated freeze-thaw cycles.
Shipping	Ice bag

Background

This gene encodes a type I transmembrane lectin that shuttles between the endoplasmic reticulum, the Golgi apparatus and the plasma membrane. The encoded protein binds high mannose type glycoproteins and may facilitate their sorting, trafficking and quality control.

For Research Use Only