

CHOP Polyclonal Antibody

catalog number: E-AB-70087

Note: Centrifuge before opening to ensure complete recovery of vial contents.

Description

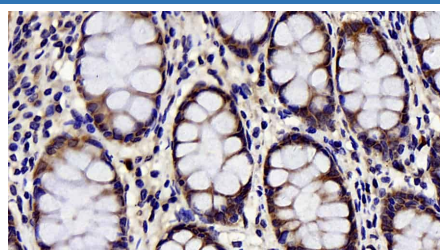
Reactivity	Human;Mouse;Rat
Immunogen	KLH conjugated Synthetic peptide corresponding to Mouse CHOP
Host	Rabbit
Isotype	IgG
Purification	Affinity purification
Conjugation	Unconjugated
buffer	Phosphate buffered solution, pH 7.4, containing 0.05% stabilizer, 1% protein protectant and 50% glycerol.

Applications

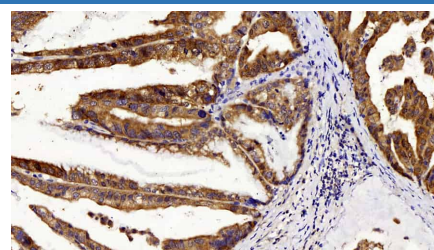
Recommended Dilution

IHC	1:100-500
------------	-----------

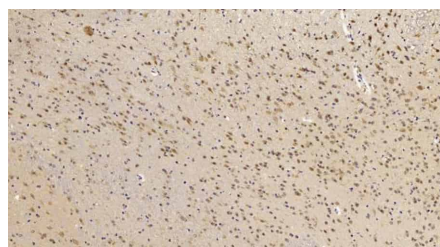
Data



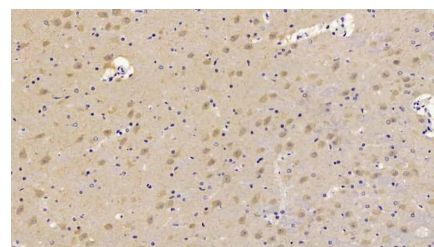
Immunohistochemistry analysis of paraffin-embedded human colon using CHOP Polyclonal Antibody at dilution of 1:300.



Immunohistochemistry analysis of paraffin-embedded human stomach cancer using CHOP Polyclonal Antibody at dilution of 1:300.



Immunohistochemistry analysis of paraffin-embedded mouse brain using CHOP Polyclonal Antibody at dilution of 1:300.



Immunohistochemistry analysis of paraffin-embedded Rat brain using CHOP Polyclonal Antibody at dilution of 1:300.

Preparation & Storage

Storage	Store at -20°C Valid for 12 months. Avoid freeze / thaw cycles.
Shipping	The product is shipped with ice pack, upon receipt, store it immediately at the temperature recommended.

Background

CHOP, also known as GADD153 or DDIT3, is a highly conserved gene in both the structural and regulatory regions to hamster gene. Induced by unfolded and misfolded proteins, CHOP is significantly induced by ER stress, deficiency of CHOP prevents cell from ER stress. CHOP is considered a proapoptotic marker of ER stress dependent cell death. CHOP acts as a dominant-negative inhibitor of the transcription factor C/EBP and LAP by forming a heterodimer. It may play an important role in the malignant transformation of nevus to melanoma.

For Research Use Only