

Recombinant Human CRYAA Protein (His Tag)

Catalog Number: PKSH033248

Note: Centrifuge before opening to ensure complete recovery of vial contents.

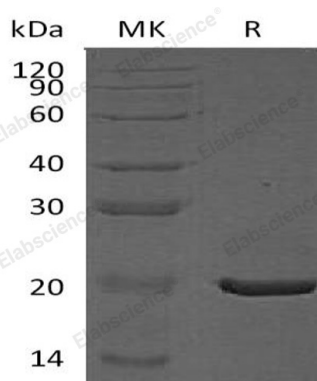
Description

Species	Human
Source	E.coli-derived Human CRYAA protein Met 1-Ser173, with an C-terminal His
Calculated MW	20.9 kDa
Observed MW	20 kDa
Accession	P02489
Bio-activity	Not validated for activity

Properties

Purity	> 90 % as determined by reducing SDS-PAGE.
Endotoxin	< 1.0 EU per µg of the protein as determined by the LAL method.
Storage	Generally, lyophilized proteins are stable for up to 12 months when stored at -20 to -80°C. Reconstituted protein solution can be stored at 4-8°C for 2-7 days. Aliquots of reconstituted samples are stable at < -20°C for 3 months.
Shipping	This product is provided as lyophilized powder which is shipped with ice packs.
Formulation	Lyophilized from a 0.2 µm filtered solution of PBS, 2mM EDTA, pH 8.0. Normally 5% - 8% trehalose, mannitol and 0.01% Tween 80 are added as protectants before lyophilization.
	Please refer to the specific buffer information in the printed manual.
Reconstitution	Please refer to the printed manual for detailed information.

Data



> 90 % as determined by reducing SDS-PAGE.

Background

Alpha-Crystallin A Chain (CRYAA) belongs to the small heat shock protein (HSP20) family and can be induced by heat shock. The expression of CRYAA is preferentially restricted to the lens cell. CRYAA may contribute to the transparency and refractive index of the lens. CRYAA has chaperone-like activity, preventing aggregation of various proteins under a wide range of stress conditions. Two additional functions of CRYAA are an autokinase activity and participation in the intracellular architecture.

For Research Use Only

Toll-free: 1-888-852-8623
Web: www.elabscience.com

Tel: 1-832-243-6086
Email: techsupport@elabscience.com

Fax: 1-832-243-6017