

BrdU Monoclonal Antibody

catalog number: E-AB-70248

Note: Centrifuge before opening to ensure complete recovery of vial contents.

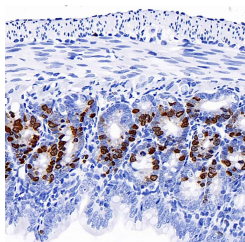
Description

Reactivity	Human;Mouse;Rat
Immunogen	KLH conjugated BrdU
Host	Mouse
Isotype	IgG
Clone	4B6C12
Purification	Affinity purification
Buffer	Phosphate buffered solution, pH 7.4, containing 0.05% stabilizer, 1% protein protectant and 50% glycerol.

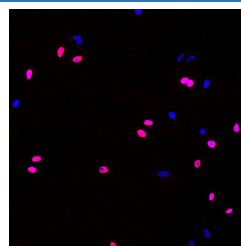
Applications

Applications	Recommended Dilution
IHC	1:100-1:500
IF	1:100-1:500

Data



Immunohistochemistry analysis of paraffin-embedded mouse jejunum (intraperitoneal injection BrdU every 2 hours for 4 times) using BrdU Monoclonal Antibody at dilution of 1:300.



Immunofluorescence analysis of HeLa cells (treated with 0.03mg/ml BrdU for 40 min) using BrdU Monoclonal Antibody at dilution of 1:100.

Preparation & Storage

Storage	Store at -20°C Valid for 12 months. Avoid freeze / thaw cycles.
Shipping	The product is shipped with ice pack, upon receipt, store it immediately at the temperature recommended.

Background

Bromodeoxyuridine (5-bromo-2'-deoxyuridine, BrdU, BUdR, BrdUrd) is a synthetic nucleoside that is an analog of thymidine. It can be incorporated into the newly synthesized DNA of replicating cells (during the S phase of the cell cycle), substituting for thymidine during DNA replication. As such, BrdU is used for birth dating and monitoring cell proliferation. BrdU is a toxic and mutagenic substance. It triggers cell death, the formation of teratomas, alters DNA stability, lengthens the cell cycle, and has mitogenic, transcriptional and translational effects on cells that incorporate it.

<div>

</div>

For Research Use Only