

## PE/Cyanine5.5 Anti-Mouse CD22 Antibody[Cy34.1]

Catalog Number: E-AB-F1021UI

Note: Centrifuge before opening to ensure complete recovery of vial contents.

### Description

<b>Reactivity</b>	Mouse
<b>Host</b>	Mouse
<b>Isotype</b>	Mouse IgG1, κ
<b>Clone No.</b>	Cy34.1
<b>Isotype Control</b>	PE/Cyanine5.5 Mouse IgG1, κ Isotype Control[MOPC-21] [Product E-AB-F09793I]
<b>Conjugation</b>	PE/Cyanine 5.5
<b>Conjugation Information</b>	PE/Cyanine5.5 is designed to be excited by the Blue (488 nm), Green (532 nm) and yellow-green (561 nm) lasers and detected using an optical filter centered near 690 nm (e.g., a 690/50 nm bandpass filter).
<b>Storage Buffer</b>	Phosphate buffered solution, pH 7.2, containing 0.09% sodium azide and 1% BSA.

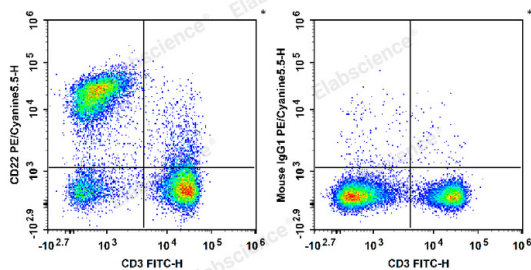
### Applications

FCM

### Recommended usage

Each lot of this antibody is quality control tested by flow cytometric analysis. Please check your vial before the experiment. Since applications vary, the appropriate dilutions must be determined for individual use. We suggest each investigator should titrate the reagent to obtain optimal results [The recommended concentration is 0.1-1 μg/10<sup>6</sup> cells in 100 μL volume].

### Data



C57BL/6 murine splenocytes are stained with FITC Anti-Mouse CD3 Antibody and PE/Cyanine5.5 Anti-Mouse CD22 Antibody (Left). Splenocytes are stained with FITC Anti-Mouse CD3 Antibody and PE/Cyanine5.5 Mouse IgG1, κ Isotype Control (Right).

### Preparation & Storage

<b>Storage</b>	Keep as concentrated solution. This product can be stored at 2-8°C for 12 months. Please protected from prolonged exposure to light and do not freeze.
<b>Shipping</b>	Ice bag

### Antigen Information

<b>Alternate Names</b>	Siglec2;B-cell receptor CD22;B-lymphocyte cell adhesion molecule;BL-CAM;CD22; Cd22;Lyb-8;Sialic acid-binding Ig-like lectin 2;Siglec-2;T-cell surface antigen Leu-14
------------------------	--

### For Research Use Only

**Uniprot ID**

P35329

**Gene ID**

12483

**Background**

The Cy34.1 monoclonal antibody specifically binds to the B-lymphocyte differentiation antigen CD22 on strains having the Lyb-8.2 alloantigen (e.g., A, BALB/c, CBA, C3H/He, C57BL, C57L, C58, SJL, SWR, but not AKR, DBA/1, DBA/2, NZB, PL). CD22 is expressed at high levels on mature peripheral B lymphocytes (follicular and marginal zone), B-1 cells (CD5+ B cells), and plasma cells. It is a member of the Ig gene superfamily and associates with the B-cell antigen receptor. Its sialic acid-binding immunoglobulin-like lectin (siglec) extracellular region mediates B-cell adhesion to ligands on endothelial cells in the bone marrow. Its intracellular domain is phosphorylated after cross-linking of antigen receptor or MHC class II antigen. It is involved in negative regulation of B-cell activation and protection from autoimmunity. B-cell proliferative responses to LPS or anti-mouse Ig  $\mu$  chain are augmented in the presence of Cy34.1 mAb.