

# Recombinant Human YKT6 Protein (His Tag)

Catalog Number: PKSH033089

**Note:** Centrifuge before opening to ensure complete recovery of vial contents.

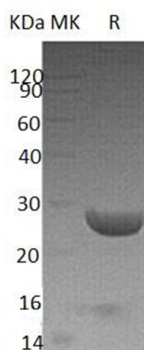
## Description

<b>Species</b>	Human
<b>Mol_Mass</b>	24.5 kDa
<b>Accession</b>	O15498
<b>Bio-activity</b>	Not validated for activity

## Properties

<b>Purity</b>	> 95 % as determined by reducing SDS-PAGE.
<b>Endotoxin</b>	< 1.0 EU per µg of the protein as determined by the LAL method.
<b>Storage</b>	Store at < -20°C, stable for 6 months. Please minimize freeze-thaw cycles.
<b>Shipping</b>	This product is provided as liquid. It is shipped at frozen temperature with blue ice/gel packs. Upon receipt, store it immediately at < -20°C.
<b>Formulation</b>	Supplied as a 0.2 µm filtered solution of 50mM Tris-HCl, pH 8.0.
<b>Reconstitution</b>	Not Applicable

## Data



> 95 % as determined by reducing SDS-PAGE.

## Background

Synaptobrevin Homolog YKT6 (YKT6) is an enzyme that belongs to the Synaptobrevin family. YKT6 contains a longin domain and a v-SNARE coiled-coil homology domain. YKT6 is highly conserved from yeast to human and it can functionally complement the loss of the yeast homolog in the yeast secretory pathway. It is a membrane associated, isoprenylated protein that functions at the endoplasmic reticulum-Golgi transport step. YKT6 is considered as one of the SNARE recognition molecules implicated in vesicular transport between secretory compartments.

## For Research Use Only