

# STK4 Polyclonal Antibody

catalog number: E-AB-13112

**Note:** Centrifuge before opening to ensure complete recovery of vial contents.

## Description

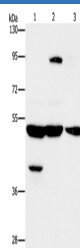
<b>Reactivity</b>	Human;Mouse
<b>Immunogen</b>	Synthetic peptide of human STK3/STK4
<b>Host</b>	Rabbit
<b>Isotype</b>	IgG
<b>Purification</b>	Affinity purification
<b>Conjugation</b>	Unconjugated
<b>buffer</b>	Phosphate buffered solution, pH 7.4, containing 0.05% stabilizer and 50% glycerol.

## Applications

## Recommended Dilution

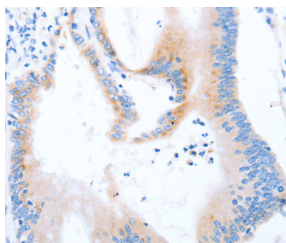
<b>WB</b>	1:500-1:2000
<b>IHC</b>	1:50-1:200

## Data

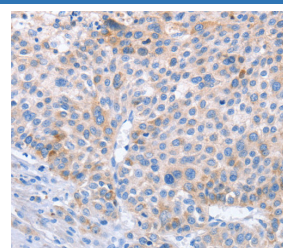


Western Blot analysis of Human bladder carcinoma tissue and A172 cell, Human brain malignant glioma tissue using STK4 Polyclonal Antibody at dilution of 1:1000

**Calculated-MV:56 kDa**



Immunohistochemistry of paraffin-embedded Human colon cancer using STK4 Polyclonal Antibody at dilution of 1:70



Immunohistochemistry of paraffin-embedded Human liver cancer using STK4 Polyclonal Antibody at dilution of 1:70

## Preparation & Storage

<b>Storage</b>	Store at -20°C Valid for 12 months. Avoid freeze / thaw cycles.
<b>Shipping</b>	The product is shipped with ice pack, upon receipt, store it immediately at the temperature recommended.

## Background

Sterile-20 (Ste20) is a serine/threonine kinase in *Saccharomyces cerevisiae* that is involved in relaying signals from G protein-coupled receptors to cyto-solic MAP kinase cascades. Mammalian protein kinases that display sequence similarity to Ste20 are divided into two groups, the PAK subfamily and the GCK subfamily. The mammalian Ste20-like kinases (MST kinases), also known as Krs proteins, are members of the GCK subfamily. Ksr-1 (MST-2) and Ksr-2 (MST-1) are both direct substrates of caspase-3 that accelerate caspase-3 activation.

## For Research Use Only