

AMPD1 Polyclonal Antibody

Catalog Number: E-AB-16156



Note: Centrifuge before opening to ensure complete recovery of vial contents.

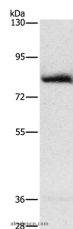
Description

Reactivity	Human
Immunogen	Synthetic peptide of human AMPD1
Host	Rabbit
Isotype	IgG
Purification	Affinity purification
Conjugation	Unconjugated
Formulation	PBS with 0.05% sodium azide and 50% glycerol, PH7.4

Applications Recommended Dilution

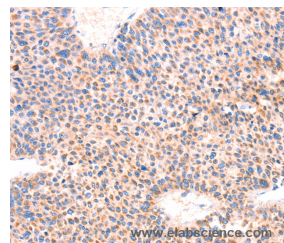
WB	1:500-1:2000
IHC	1:100-1:300

Data

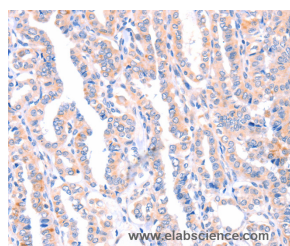


Western Blot analysis of Human fetal muscle tissue using AMPD1 Polyclonal Antibody at dilution of 1:1600

Calculated Mw:90kDa



Immunohistochemistry of paraffin-embedded Human liver cancer using AMPD1 Polyclonal Antibody at dilution of 1:70



Immunohistochemistry of paraffin-embedded Human thyroid cancer using AMPD1 Polyclonal Antibody at dilution of 1:70

Preparation & Storage

Storage Store at -20°C. Avoid freeze / thaw cycles.

Background

Adenosine monophosphate deaminase 1 catalyzes the deamination of AMP to IMP in skeletal muscle and plays an important role in the purine nucleotide cycle. Two other genes have been identified, AMPD2 and AMPD3, for the liver- and erythrocyte-specific isoforms, respectively. Deficiency of the muscle-specific enzyme is apparently a common cause

For Research Use Only

A Reliable Research Partner in Life Science and Medicine

Toll-free: 1-888-852-8623

Web: www.elabscience.com

Tel: 1-832-243-6086

Email: techsupport@elabscience.com

Fax: 1-832-243-6017

AMPD1 Polyclonal Antibody

Catalog Number: E-AB-16156



of exercise-induced myopathy and probably the most common cause of metabolic myopathy in the human. Alternatively spliced transcript variants encoding different isoforms have been identified in this gene.

For Research Use Only

A Reliable Research Partner in Life Science and Medicine

Toll-free: 1-888-852-8623

Tel: 1-832-243-6086

Fax: 1-832-243-6017

Web: www.elabscience.com

Email: techsupport@elabscience.com