

Recombinant Human PKIB/PKI-β Protein (His Tag)

Catalog Number: PKSH032155

Note: Centrifuge before opening to ensure complete recovery of vial contents.

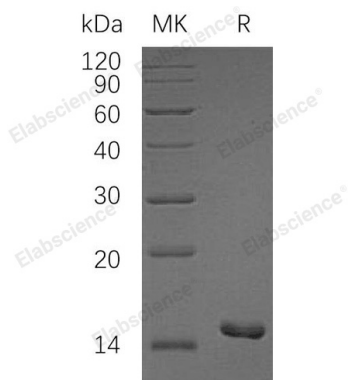
Description

Species	Human
Source	E.coli-derived Human PKIB;PKI-β protein Met 1-Lys78, with an N-terminal His
Calculated MW	10.6 kDa
Observed MW	16 kDa
Accession	Q9C010
Bio-activity	Not validated for activity

Properties

Purity	> 95 % as determined by reducing SDS-PAGE.
Concentration	Subject to label value.
Endotoxin	< 1.0 EU per µg of the protein as determined by the LAL method.
Storage	Store at < -20°C, stable for 6 months. Please minimize freeze-thaw cycles.
Shipping	This product is provided as liquid. It is shipped at frozen temperature with blue ice/gel packs. Upon receipt, store it immediately at < - 20°C.
Formulation	Supplied as a 0.2 µm filtered solution of 20mM Tris-HCl, 100mM NaCl, 1mM DTT, 20% Glycerol, pH 8.0.

Data



> 95 % as determined by reducing SDS-PAGE.

Background

cAMP-Dependent Protein Kinase Inhibitor β (PKI-β) is a member of the PKI family. As a member of the cAMP-dependent protein kinase inhibitor family, It has been shown that PKI-β is an extremely potent competitive inhibitor of cAMP-dependent protein kinase activity; this protein interacts with the catalytic subunit of the enzyme after the cAMP-induced dissociation of its regulatory chains. It may play a role in the protein kinase A (PKA) pathway by interacting with the catalytic subunit of PKA, and overexpression of this gene may play a role in prostate cancer.