

# INSM2 Polyclonal Antibody

catalog number: E-AB-18118

**Note:** Centrifuge before opening to ensure complete recovery of vial contents.

## Description

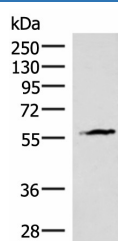
<b>Reactivity</b>	Human;Mouse
<b>Immunogen</b>	Synthetic peptide of human INSM2
<b>Host</b>	Rabbit
<b>Isotype</b>	IgG
<b>Purification</b>	Antigen affinity purification
<b>Conjugation</b>	Unconjugated
<b>buffer</b>	Phosphate buffered solution, pH 7.4, containing 0.05% stabilizer and 50% glycerol.

## Applications

## Recommended Dilution

<b>WB</b>	1:500-1:2000
<b>IHC</b>	1:25-1:100

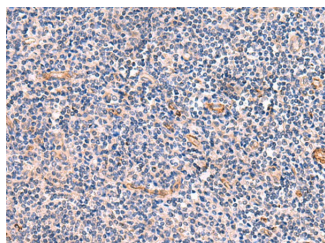
## Data



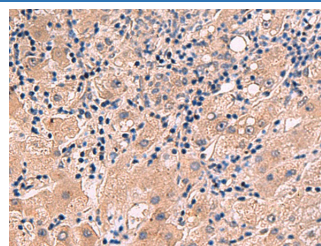
Western blot analysis of Mouse heart tissue lysate using INSM2 Polyclonal Antibody at dilution of 1:400

**Observed-MV: Refer to figures**

**Calculated-MV: 59 kDa**



Immunohistochemistry of paraffin-embedded Human tonsil tissue using INSM2 Polyclonal Antibody at dilution of 1:35( $\times 200$ )



Immunohistochemistry of paraffin-embedded Human liver cancer tissue using INSM2 Polyclonal Antibody at dilution of 1:35( $\times 200$ )

## Preparation & Storage

<b>Storage</b>	Store at $-20^{\circ}\text{C}$ Valid for 12 months. Avoid freeze / thaw cycles.
<b>Shipping</b>	The product is shipped with ice pack, upon receipt, store it immediately at the temperature recommended.

## Background

May function as a growth suppressor or tumor suppressor in liver cells and in certain neurons.

## For Research Use Only