

PE Anti-Mouse CD34 Antibody[MEC14.7]

Catalog Number: AN00926D

Note: Centrifuge before opening to ensure complete recovery of vial contents.

Description

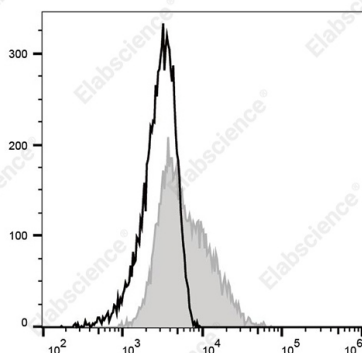
Reactivity	Mouse
Host	Rat
Isotype	Rat IgG2a
Clone No.	MEC14.7
Isotype Control	PE Rat IgG2a, κ Isotype Control[2A3] [Product E-AB-F09832D]
Conjugation	PE
Conjugation Information	PE is designed to be excited by the Blue (488 nm), Green (532 nm) and Yellow-Green (561 nm) lasers and detected using an optical filter centered near 575 nm (e.g., a 585/42 nm bandpass filter).
Storage Buffer	Phosphate buffered solution, pH 7.2, containing 0.09% stabilizer.

Applications

Recommended usage

FCM	Each lot of this antibody is quality control tested by flow cytometric analysis. The amount of the reagent is suggested to be used 5 μL of antibody per test (million cells in 100 μL staining volume or per 100 μL of whole blood). Please check your vial before the experiment. Since applications vary, the appropriate dilutions must be determined for individual use.
------------	---

Data



Staining of the NIH/3T3 with PE Anti-Mouse CD34 Antibody[MEC14.7] (filled gray histogram) or PE Rat IgG2a, κ Isotype Control (empty black histogram). Total viable cells were used for analysis.

Preparation & Storage

Storage	Keep as concentrated solution. This product can be stored at 2-8°C for 12 months. Please protected from prolonged exposure to light and do not freeze.
Shipping	Ice bag

Antigen Information

Alternate Names	Mucosialin
Uniprot ID	Q64314
Gene ID	12490

For Research Use Only

Toll-free: 1-888-852-8623
Web: www.elabscience.com

Tel: 1-832-243-6086
Email: techsupport@elabscience.com

Fax: 1-832-243-6017

Rev. V1.2

Background

CD34 is a highly glycosylated hematopoietic progenitor antigen. Two isoforms of CD34 have been reported to be generated by alternative splicing. This antigen is expressed on hematopoietic progenitors as well as on endothelial cells, brain, and testis. CD34 is thought to function as an adhesion molecule for early hematopoietic progenitors mediating the attachment of stem cells to extracellular matrix or stromal cells. CD34 is phosphorylated on serine residues by PKC.

For Research Use Only