

AF/LE Purified Anti-Human CD3ε Antibody[HIT3a]

catalog number: E-AB-F12770

Note: Centrifuge before opening to ensure complete recovery of vial contents.

Description

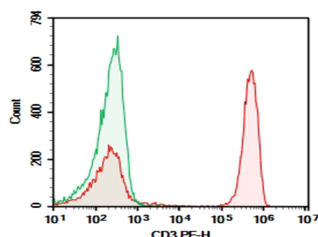
Reactivity	Human
Immunogen	Recombinant Human CD3E protein
Host	Mouse
Isotype	Mouse IgG2a, κ
Clone	HIT3a
Purification	>98%, Protein A/G purified
Conjugation	None (AF/LE)
Buffer	Sterile PBS, pH 7.2. < 1.0 EU per mg of the antibody as determined by the LAL method.

Applications

Recommended Dilution

FCM	2 µg/mL(0.5×10 ⁶ -1×10 ⁶ cells)
------------	---

Data



Human peripheral blood lymphocytes were stained with 0.2 µg AF/LE Purified Anti-Human CD3ε Antibody[HIT3a] (Right) and 0.2 µg Mouse IgG2a, κ Isotype Control (Left), followed by PE-conjugated Goat Anti-Mouse IgG Secondary Antibody.

Preparation & Storage

Storage	Store at 4°C valid for 12 months or -20°C valid for long term storage, avoid freeze / thaw cycles. This preparation contains no preservatives, thus it should be handled under aseptic conditions.
Shipping	Ice bag

Background

CD3 epsilon is one of at least four invariant proteins that associate with the variable antigen recognition chains of the T cell receptor and function in signal transduction.