

SYNE3 Polyclonal Antibody

catalog number: **E-AB-64512**

Note: Centrifuge before opening to ensure complete recovery of vial contents.

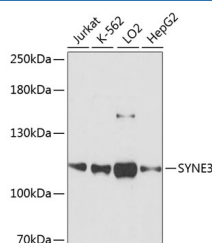
Description

Reactivity	Human
Immunogen	Recombinant fusion protein of human SYNE3 (NP_689805.3).
Host	Rabbit
Isotype	IgG
Purification	Affinity purification
Buffer	Phosphate buffered solution, pH 7.4, containing 0.05% stabilizer and 50% glycerol.

Applications

WB	1:500-1:2000
-----------	--------------

Data



Western blot analysis of extracts of various cell lines using SYNE3 Polyclonal Antibody at dilution of 1:3000.

Observed-MV:112 kDa

Calculated-MV:68 kDa/111 kDa/112 kDa

Preparation & Storage

Storage	Store at -20°C Valid for 12 months. Avoid freeze / thaw cycles.
Shipping	The product is shipped with ice pack, upon receipt, store it immediately at the temperature recommended.

Background

SYNE3 (Spectrin Repeat Containing Nuclear Envelope Family Member 3) is a Protein Coding gene. Diseases associated with SYNE3 include Spinocerebellar Ataxia, Autosomal Recessive 8 and Emery-Dreifuss Muscular Dystrophy 3, Autosomal Recessive. Gene Ontology (GO) annotations related to this gene include actin binding and actin filament binding. An important paralog of this gene is SPTBN2.

For Research Use Only