

## Fth1 Polyclonal Antibody

**catalog number: D-AB-10200L**

**Note:** Centrifuge before opening to ensure complete recovery of vial contents.

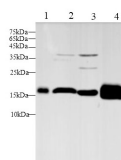
### Description

<b>Reactivity</b>	Mouse;Rat
<b>Immunogen</b>	Recombinant Mouse Fth1 protein expressed by E.coli
<b>Host</b>	Rabbit
<b>Isotype</b>	IgG
<b>Purification</b>	Antigen Affinity Purification
<b>Buffer</b>	PBS with 0.05% Proclin300, 1% protective protein and 50% glycerol, pH7.4

### Applications Recommended Dilution

<b>WB</b>	1:500-1:1000
-----------	--------------

### Data



Western blot with Fth1 Polyclonal antibody at dilution of 1:500. lane 1:RAW264.7 whole cell lysate, lane 2:Mouse brain, lane 3:Mouse liver, lane 4:C6 whole cell lysate

**Observed-MW:21 kDa**

**Calculated-MW:21 kDa**

### Preparation & Storage

<b>Storage</b>	Store at -20°C Valid for 12 months. Avoid freeze / thaw cycles.
<b>Shipping</b>	The product is shipped with ice pack, upon receipt, store it immediately at the temperature recommended.

### Background

Stores iron in a soluble, non-toxic, readily available form (By similarity). Important for iron homeostasis (By similarity). Has ferroxidase activity (By similarity). Iron is taken up in the ferrous form and deposited as ferric hydroxides after oxidation (By similarity). Also plays a role in delivery of iron to cells. Mediates iron uptake in capsule cells of the developing kidney

### For Research Use Only