

## ARG1 Polyclonal Antibody

catalog number: E-AB-70142

**Note:** Centrifuge before opening to ensure complete recovery of vial contents.

### Description

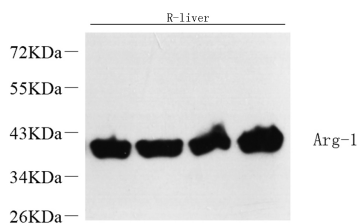
<b>Reactivity</b>	Human;Mouse;Rat
<b>Immunogen</b>	Recombinant protein corresponding to Mouse Arginase-1
<b>Host</b>	Rabbit
<b>Isotype</b>	IgG
<b>Purification</b>	Affinity purification
<b>Conjugation</b>	Unconjugated
<b>Buffer</b>	Phosphate buffered solution, pH 7.4, containing 0.05% stabilizer, 1% protein protectant and 50% glycerol.

### Applications

### Recommended Dilution

<b>WB</b>	1:2000-1:10000
-----------	----------------

### Data



Western Blot analysis of various samples using ARG1  
Polyclonal Antibody at dilution of 1:10000.

**Observed-MW:40 kDa**

**Calculated-MW:35 kDa**

### Preparation & Storage

<b>Storage</b>	Store at -20°C Valid for 12 months. Avoid freeze / thaw cycles.
<b>Shipping</b>	The product is shipped with ice pack, upon receipt, store it immediately at the temperature recommended.

### Background

Liver arginase(Arginase-1) belongs to the arginase family. Hepatic arginase 1 is closely associated with alternative macrophage activation(PMID:12098359) and Arg1 has been shown to protect motor neurons from trophic factor deprivation and allow sensory neurons to overcome neurite outgrowth inhibition by myelin proteins(PMID: 20071539).It can exist as a homotrimer(PMID:16141327) and it has 3 isoforms produced by alternative splicing.Defects in ARG1 are the cause of argininemia (ARGIN).

### For Research Use Only