

Recombinant Neuroserpin/SerpinI1 Monoclonal Antibody

catalog number: **AN300567P**

Note: Centrifuge before opening to ensure complete recovery of vial contents.

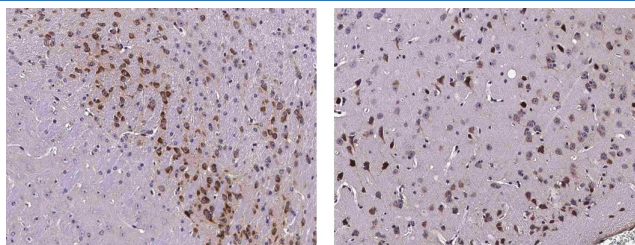
Description

Reactivity	Mouse
Immunogen	Recombinant Mouse Neuroserpin/SerpinI1 protein
Host	Rabbit
Isotype	IgG
Clone	10A4
Purification	Protein A
Buffer	0.2 µm filtered solution in PBS

Applications Recommended Dilution

IHC-P	1:500-1:2000
--------------	--------------

Data



Immunohistochemistry of paraffin-embedded mouse brain (from 2 donors) using Neuroserpin/SerpinI1 Monoclonal Antibody at dilution of 1:1000.

Preparation & Storage

Storage	This antibody can be stored at 2°C-8°C for one month without detectable loss of activity. Antibody products are stable for twelve months from date of receipt when stored at -20°C to -80°C. Preservative-Free. Avoid repeated freeze-thaw cycles.
Shipping	Ice bag

Background

Neuroserpin, also known as Protease inhibitor 12 and SERPINI1, is a secreted protein that belongs to the serpin family. Neuroserpin is a serine protease inhibitor that inhibits plasminogen activators and plasmin but not thrombin. Serine protease inhibitors of the serpin superfamily are involved in many cellular processes. Neuroserpin was first identified as a protein secreted from the axons of dorsal root ganglion neurons. Neuroserpin is predominantly expressed in the brain, and is expressed in the late stages of neurogenesis during the process of synapse formation. Overexpression of neuroserpin in an anterior pituitary corticotroph cell line results in the extension of neurite-like processes, suggesting that neuroserpin may play a role in cell communication, cell adhesion, and/or cell migration. Neuroserpin may be involved in the formation or reorganization of synaptic connections, as well as synaptic plasticity in the adult nervous system. Neuroserpin may also protect neurons from cell damage by tissue-type plasminogen activator. Defects of neuroserpin are the cause of familial encephalopathy with neuroserpin inclusion bodies (FEN1B).

For Research Use Only