

Recombinant Human ANPEP/CD13 Protein (603 Met/Ile, His Tag)



Catalog Number: PKSH031912

Note: Centrifuge before opening to ensure complete recovery of vial contents.

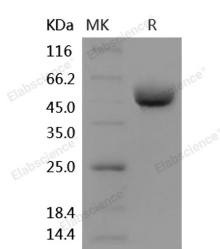
Description

Synonyms	APN;CD13;GP150;LAP1;P150;PEPN
Species	Human
Expression Host	HEK293 Cells
Sequence	Lys 69-Lys 967-603 Met/Ile
Accession	NP_001141.2
Calculated Molecular Weight	104.2 kDa
Observed molecular weight	135-140 kDa
Tag	C-His
Bioactivity	Measured by its ability to cleave the fluorogenic peptide substrate, Ala-7-amido-4-methylcoumarin (Ala-AMC). The specific activity is > 2, 500 pmoles/min/μg.

Properties

Purity	> 97 % as determined by reducing SDS-PAGE.
Endotoxin	< 1.0 EU per μg of the protein as determined by the LAL method.
Storage	Generally, lyophilized proteins are stable for up to 12 months when stored at -20 to -80°C. Reconstituted protein solution can be stored at 4-8°C for 2-7 days. Aliquots of reconstituted samples are stable at < -20°C for 3 months.
Shipping	This product is provided as lyophilized powder which is shipped with ice packs.
Formulation	Lyophilized from sterile PBS, pH 7.3 Normally 5 % - 8 % trehalose, mannitol and 0.01% Tween80 are added as protectants before lyophilization. Please refer to the specific buffer information in the printed manual.
Reconstitution	Please refer to the printed manual for detailed information.

Data



> 97 % as determined by reducing SDS-PAGE.

Background

Aminopeptidase N (ANPEP or APN), also known as CD13, is a cell-surface metalloprotease located in the small-intestinal and renal microvillar membrane, as well as other plasma membranes. It belongs to the peptidase M1 family. CD13 plays a role in the final digestion of peptides generated from hydrolysis of proteins by gastric and pancreatic proteases and is involved in the metabolism of regulatory peptides by diverse cell types. CD13/APN is a potent regulator of angiogenesis which is essential for tumor invasion and metastasis, and its transcription in activated endothelial cells is

For Research Use Only

A Reliable Research Partner in Life Science and Medicine

Toll-free: 1-888-852-8623

Web: www.elabscience.com

Tel: 1-832-243-6086

Email: techsupport@elabscience.com

Fax: 1-832-243-6017

Recombinant Human ANPEP/CD13 Protein (603 Met/Ile, His Tag)



Catalog Number: PKSH031912

induced by angiogenic growth factors via the RAS/MAPK pathway. In addition, this enzyme has been shown to participate in antigen processing and presentation, and accordingly, defects in this gene appear to be a cause of various types of leukemia or lymphoma and carcinomas.

For Research Use Only

A Reliable Research Partner in Life Science and Medicine

Toll-free: 1-888-852-8623

Web: www.elabscience.com

Tel: 1-832-243-6086

Email: techsupport@elabscience.com

Fax: 1-832-243-6017