

(KO Validated) IGF2BP1/IMP1 Polyclonal Antibody

catalog number: **E-AB-92453**

Note: Centrifuge before opening to ensure complete recovery of vial contents.

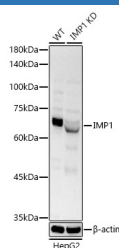
Description

Reactivity	Human;Mouse;Rat
Immunogen	Recombinant fusion protein of human IMP1
Host	Rabbit
Isotype	IgG
Purification	Affinity purification
Buffer	Phosphate buffered solution, pH 7.4, containing 0.05% stabilizer and 50% glycerol.

Applications

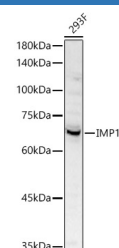
WB	1:500-1:2000
-----------	--------------

Data



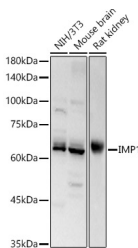
Western blot analysis of extracts from normal (control) and knockdown (KD) HepG2 cells, using ZEB1 Polyclonal Antibody at 1:500 dilution.

Observed-MW:64 kDa
Calculated-MW:48 kDa/63 kDa



Western blot analysis of 293F using IMP1 Polyclonal Antibody at 1:500 dilution.

Observed-MW:64 kDa
Calculated-MW:48 kDa/63 kDa



Western blot analysis of various lysates using IMP1 Polyclonal Antibody at 1:500 dilution.

Observed-MW:64 kDa
Calculated-MW:48 kDa/63 kDa

Preparation & Storage

Storage	Store at -20°C Valid for 12 months. Avoid freeze / thaw cycles.
Shipping	The product is shipped with ice pack, upon receipt, store it immediately at the temperature recommended.

Background

For Research Use Only

This gene encodes a member of the insulin-like growth factor 2 mRNA-binding protein family. The protein encoded by this gene contains four K homology domains and two RNA recognition motifs. It functions by binding to the mRNAs of certain genes, including insulin-like growth factor 2, beta-actin and beta-transducin repeat-containing protein, and regulating their translation. Two transcript variants encoding different isoforms have been found for this gene.

For Research Use Only

Toll-free: 1-888-852-8623
Web: www.elabscience.com

Tel: 1-832-243-6086
Email: techsupport@elabscience.com

Fax: 1-832-243-6017

Rev. V1.7