

## MAGED1 Polyclonal Antibody

**catalog number: E-AB-14204**

**Note:** Centrifuge before opening to ensure complete recovery of vial contents.

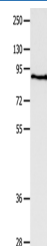
### Description

<b>Reactivity</b>	Human;Mouse;Rat
<b>Immunogen</b>	Recombinant protein of human MAGED1
<b>Host</b>	Rabbit
<b>Isotype</b>	IgG
<b>Purification</b>	Affinity purification
<b>Buffer</b>	Phosphate buffered solution, pH 7.4, containing 0.05% stabilizer and 50% glycerol.

### Applications

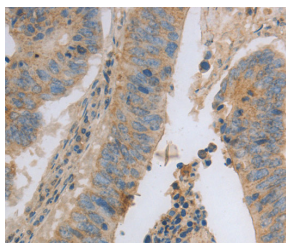
Applications	Recommended Dilution
<b>WB</b>	1:1000-1:5000
<b>IHC</b>	1:25-1:100

### Data

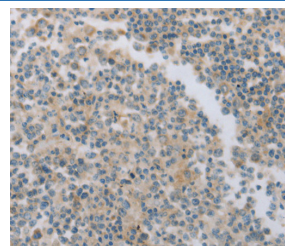


Western Blot analysis of Human fetal brain tissue using MAGED1 Polyclonal Antibody at dilution of 1:1200

**Calculated-MW:86 kDa**



Immunohistochemistry of paraffin-embedded Human colon cancer using MAGED1 Polyclonal Antibody at dilution of 1:30



Immunohistochemistry of paraffin-embedded Human tonsil using MAGED1 Polyclonal Antibody at dilution of 1:30

### Preparation & Storage

<b>Storage</b>	Store at -20°C Valid for 12 months. Avoid freeze / thaw cycles.
<b>Shipping</b>	The product is shipped with ice pack, upon receipt, store it immediately at the temperature recommended.

### Background

### For Research Use Only

This gene is a member of the melanoma antigen gene (MAGE) family. Most of the genes of this family encode tumor specific antigens that are not expressed in normal adult tissues except testis. Although the protein encoded by this gene shares strong homology with members of the MAGE family, it is expressed in almost all normal adult tissues. This gene has been demonstrated to be involved in the p75 neurotrophin receptor mediated programmed cell death pathway. Three transcript variants encoding two different isoforms have been found for this gene.

## For Research Use Only