

KDM5B Polyclonal Antibody

Catalog Number:E-AB-13360



Note: Centrifuge before opening to ensure complete recovery of vial contents.

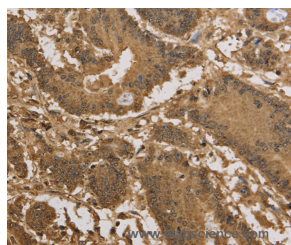
Description

Reactivity	Human,Mouse
Immunogen	Synthetic peptide of human KDM5B
Host	Rabbit
Isotype	IgG
Purification	Affinity purification
Conjugation	Unconjugated
Formulation	PBS with 0.05% sodium azide and 50% glycerol, PH7.4

Applications Recommended Dilution

IHC	1:50-1:200
------------	------------

Data



Immunohistochemistry of paraffin-embedded Human colon cancer tissue using KDM5B Polyclonal Antibody at dilution 1:40

Preparation & Storage

Storage	Store at -20°C. Avoid freeze / thaw cycles.
----------------	---------------------------------------------

Background

PLU-1 is a large (1,544 amino acid) nuclear protein that interacts with brain factor-1 (BF-1) and paired box 9 (PAX9), both of which are developmental transcription factors. PLU-1 belongs to the testis-cancer antigen group of proteins and is a member of the ARID family of DNA binding proteins. It is a multi-domain protein with strong transcriptional repression properties. PLU-1 shows restricted expression in adult tissues, with high expression in testis and transient expression in the pregnant mammary gland. Both the PLU-1 gene and the PLU-1 protein product are specifically upregulated in breast cancer. PLU-1 may be important in meiotic transcription because of its apparent association with chromatin.

For Research Use Only

A Reliable Research Partner in Life Science and Medicine

Toll-free: 1-888-852-8623

Web: www.elabscience.com

Tel: 1-832-243-6086

Email: techsupport@elabscience.com

Fax: 1-832-243-6017