

# YRDC Polyclonal Antibody

catalog number: E-AB-53354

**Note:** Centrifuge before opening to ensure complete recovery of vial contents.

## Description

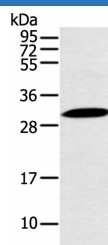
<b>Reactivity</b>	Human;Mouse;Rat
<b>Immunogen</b>	Synthetic peptide of human YRDC
<b>Host</b>	Rabbit
<b>Isotype</b>	IgG
<b>Purification</b>	Antigen affinity purification
<b>Conjugation</b>	Unconjugated
<b>buffer</b>	Phosphate buffered solution, pH 7.4, containing 0.05% stabilizer and 50% glycerol.

## Applications

## Recommended Dilution

<b>WB</b>	1:500-1:2000
-----------	--------------

## Data



Western blot analysis of Mouse stomach tissue using YRDC

Polyclonal Antibody at dilution of 1:250

**Observed-MV: Refer to figures**

**Calculated-MV: 29 kDa**

## Preparation & Storage

<b>Storage</b>	Store at -20°C Valid for 12 months. Avoid freeze / thaw cycles.
<b>Shipping</b>	The product is shipped with ice pack, upon receipt, store it immediately at the temperature recommended.

## Background

YrdC (yrdC domain containing protein), also known as IRIP (ischemia/reperfusion-inducible protein homolog), SUA5 or DRIP3 (dopamine receptor-interacting protein 3), is a 279 amino acid ubiquitously expressed protein found at highest levels in brain, liver and pancreas. A member of the SUA5 family, yrdC is involved in certain aspects of transporter activity, such as the regulation of efflux transporter activity and cargo assembly. YrdC is a peripheral membrane protein that contains one yrdC-like domain, interacts with RSC1A1 and localizes to mitochondrial and plasma membranes.

## For Research Use Only