

Complement Factor B Polyclonal Antibody

catalog number: **E-AB-67031**

Note: Centrifuge before opening to ensure complete recovery of vial contents.

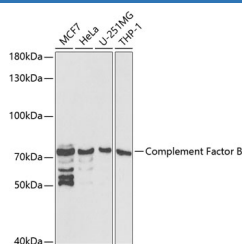
Description

Reactivity	Human;Mouse;Rat
Immunogen	Recombinant fusion protein of human Complement Factor B (NP_001701.2).
Host	Rabbit
Isotype	IgG
Purification	Affinity purification
Buffer	Phosphate buffered solution, pH 7.4, containing 0.05% stabilizer and 50% glycerol.

Applications

Applications	Recommended Dilution
WB	1:500-1:2000
IHC	1:50-1:200
IF	1:50-1:200

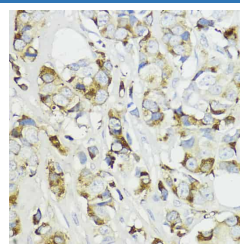
Data



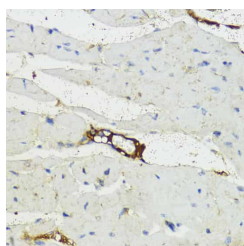
Western blot analysis of extracts of various cell lines using Complement Factor B Polyclonal Antibody at dilution of 1:1000.

Observed-MV:86 kDa

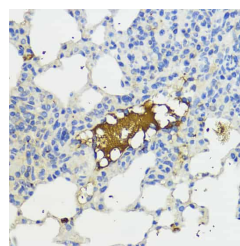
Calculated-MV:68 kDa/85 kDa



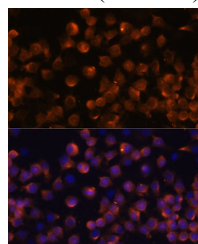
Immunohistochemistry of paraffin-embedded Human mammary cancer using Complement Factor B Polyclonal Antibody at dilution of 1:200 (40x lens).



Immunohistochemistry of paraffin-embedded Mouse heart using Complement Factor B Polyclonal Antibody at dilution of 1:200 (40x lens).



Immunohistochemistry of paraffin-embedded Mouse lung using Complement Factor B Polyclonal Antibody at dilution of 1:200 (40x lens).



For Research Use Only

Immunofluorescence analysis of Raw264.7 cells using
Complement Factor B Polyclonal Antibody at dilution of
1:100 (40x lens). Blue: DAPI for nuclear staining.

Preparation & Storage

Storage

Store at -20°C Valid for 12 months. Avoid freeze / thaw cycles.

Shipping

The product is shipped with ice pack, upon receipt, store it immediately at the temperature recommended.

Background

This gene encodes complement factor B, a component of the alternative pathway of complement activation. Factor B circulates in the blood as a single chain polypeptide. Upon activation of the alternative pathway, it is cleaved by complement factor D yielding the noncatalytic chain Ba and the catalytic subunit Bb. The active subunit Bb is a serine protease which associates with C3b to form the alternative pathway C3 convertase. Bb is involved in the proliferation of preactivated B lymphocytes, while Ba inhibits their proliferation. This gene localizes to the major histocompatibility complex (MHC) class III region on chromosome 6. This cluster includes several genes involved in regulation of the immune reaction. Polymorphisms in this gene are associated with a reduced risk of age-related macular degeneration. The polyadenylation site of this gene is 421 bp from the 5' end of the gene for complement component 2.

For Research Use Only