

PSMA4 Polyclonal Antibody

catalog number: **E-AB-52721**

Note: Centrifuge before opening to ensure complete recovery of vial contents.

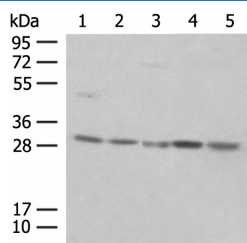
Description

Reactivity	Human;Mouse;Rat
Immunogen	Fusion protein of human PSMA4
Host	Rabbit
Isotype	IgG
Purification	Antigen affinity purification
Buffer	Phosphate buffered solution, pH 7.4, containing 0.05% stabilizer and 50% glycerol.

Applications

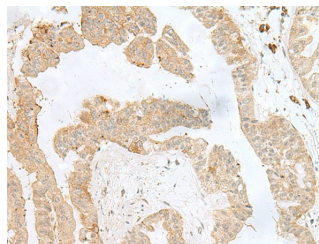
Applications	Recommended Dilution
WB	1:500-1:2000
IHC	1:40-1:200

Data



Western blot analysis of NIH/3T3 cell Mouse spleen tissue K562 cell Hela cell 231 cell lysates using PSMA4 Polyclonal Antibody at dilution of 1:400

Observed-MW:Refer to figures
Calculated-MW:29 kDa



Immunohistochemistry of paraffin-embedded Human liver cancer tissue using PSMA4 Polyclonal Antibody at dilution of 1:50(×200)

Preparation & Storage

Storage	Store at -20°C Valid for 12 months. Avoid freeze / thaw cycles.
Shipping	The product is shipped with ice pack,upon receipt,store it immediately at the temperature recommended.

Background

This gene encodes a core alpha subunit of the 20S proteasome, which is a highly ordered ring-shaped structure composed of four rings of 28 non-identical subunits. Proteasomes cleave peptides in an ATP- and ubiquitin-dependent manner.

For Research Use Only