

PMP2 Polyclonal Antibody

Catalog Number: E-AB-16991



Note: Centrifuge before opening to ensure complete recovery of vial contents.

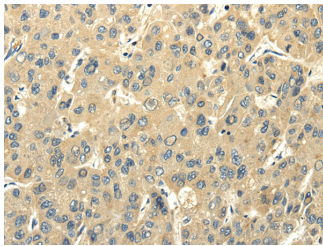
Description

Reactivity	Human, Mouse
Immunogen	Full length fusion protein
Host	Rabbit
Isotype	IgG
Purification	Affinity purification
Conjugation	Unconjugated
Formulation	PBS with 0.05% sodium azide and 50% glycerol, PH7.4

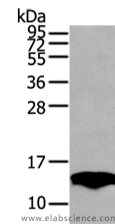
Applications Recommended Dilution

WB	1:1000-5000
IHC	1:25-100
ELISA	1:2000-10000

Data



Immunohistochemistry of paraffin-embedded Human liver cancer using PMP2 Polyclonal Antibody at dilution of 1/25
Calculated Mw: 15 kDa



Western Blot analysis of Mouse fat tissue using PMP2 Polyclonal Antibody at dilution of 1/400

Preparation & Storage

Storage Store at -20°C. Avoid freeze / thaw cycles.

Background

Peripheral Myelin protein-2 (PMP2, Myelin P2, MP2), a small basic enzyme, is one of the principal proteins of peripheral Myelin and presumably participates in the transport of fatty acids or the metabolism of Myelin lipids. Myelin P2 is similar in amino acid sequence and tertiary structure to fatty acid binding proteins found in the liver, adipocytes and intestine, although its expression is restricted to the nervous system.

For Research Use Only

A Reliable Research Partner in Life Science and Medicine

Toll-free: 1-888-852-8623

Web: www.elabscience.com

Tel: 1-832-243-6086

Email: techsupport@elabscience.com

Fax: 1-832-243-6017