

Recombinant Human LILRA5 Protein (His Tag)

Catalog Number: PDMH100368

Note: *Centrifuge before opening to ensure complete recovery of vial contents.*

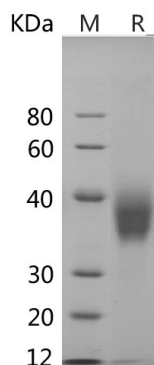
Description

Species	Human
Source	Mammalian-derived Human LILRA5 protein Gly42-Arg268, with an C-terminal His
Calculated MW	26.1 kDa
Observed MW	35-40 kDa
Accession	A6NI73
Bio-activity	Not validated for activity

Properties

Purity	> 95% as determined by reducing SDS-PAGE.
Endotoxin	< 1.0 EU/mg of the protein as determined by the LAL method
Storage	Generally, lyophilized proteins are stable for up to 12 months when stored at -20 to -80°C. Reconstituted protein solution can be stored at 4-8°C for 2-7 days. Aliquots of reconstituted samples are stable at < -20°C for 3 months.
Shipping	This product is provided as lyophilized powder which is shipped with ice packs.
Formulation	Lyophilized from a 0.2 µm filtered solution in PBS with 5% Trehalose and 5% Mannitol.
Reconstitution	It is recommended that sterile water be added to the vial to prepare a stock solution of 0.5 mg/mL. Concentration is measured by UV-Vis.

Data



SDS-PAGE analysis of Human LILRA5 proteins, 2 µg/lane of Recombinant Human LILRA5 proteins was resolved with SDS-PAGE under reducing conditions, showing bands at 35-40 kDa.

Background

For Research Use Only

Toll-free: 1-888-852-8623
Web: www.elabscience.com

Tel: 1-832-243-6086
Email: techsupport@elabscience.com

Fax: 1-832-243-6017

Leukocyte Immunoglobulin-like Receptor Subfamily A Member 5 (LILRA5) is a member of the leukocyte immunoglobulin-like receptors (LILR), comprise a family of activating and inhibitory type immunoreceptors. LILRA5 consists of a 227 amino acid (aa) extracellular domain (ECD), a 21 aa transmembrane segment, and a 10 aa cytoplasmic tail. The ECD contains two Ig-like domains and the transmembrane segment contains a positively charged aspartic acid residue which may mediate its association with the signaling molecule, FcR common gamma chain. LILRA5 is expressed by monocytes, macrophages, and neutrophils. Cross-linking of LILRA5 on monocytes induces the expression of pro-inflammatory cytokines (IL-1beta, IL-6, TNF-alpha) as well as the anti-inflammatory IL-10. It can be detected in tissues of the hematopoietic system, including bone marrow, spleen, lymph node and peripheral leukocytes. Crosslink of ILT-11 on the surface of monocytes has been shown to induce calcium flux and secretion of several proinflammatory cytokines, which suggests the roles of this protein in triggering innate immune responses.

For Research Use Only

Toll-free: 1-888-852-8623

Web: www.elabscience.com

Tel: 1-832-243-6086

Email: techsupport@elabscience.com

Fax: 1-832-243-6017