

S100A7 Polyclonal Antibody

catalog number: **E-AB-40420**

Note: Centrifuge before opening to ensure complete recovery of vial contents.

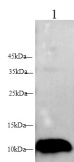
Description

Reactivity	Human
Immunogen	Recombinant Human Protein S100-A7 protein
Host	Rabbit
Isotype	IgG
Purification	Antigen Affinity Purification
Buffer	PBS with 0.05% proclin 300, 1% protective protein and 50% glycerol,pH7.4

Applications

Applications	Recommended Dilution
WB	1:200-1:500
IHC	1:50-1:300

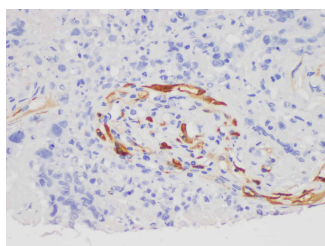
Data



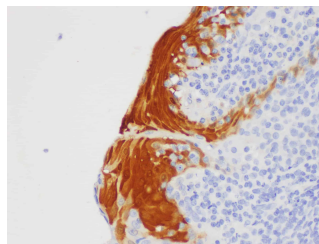
Western blot with anti-S100A7 polyclonal Antibody at dilution of 1:500.lane 1: A431

Observed-MW:11 kDa

Calculated-MW:11 kDa



Immunohistochemistry of paraffin-embedded Human lung cancer using S100A7 Polyclonal Antibody at dilution of 1:200



Immunohistochemistry of paraffin-embedded Human tonsil using S100A7 Polyclonal Antibody at dilution of 1:200

Preparation & Storage

Storage	Store at -20°C Valid for 12 months. Avoid freeze / thaw cycles.
Shipping	The product is shipped with ice pack,upon receipt,store it immediately at the temperature recommended.

Background

For Research Use Only

The protein encoded by this gene is a member of the S100 family of proteins containing 2 EF-hand calcium-binding motifs. S100 proteins are localized in the cytoplasm and/or nucleus of a wide range of cells, and involved in the regulation of a number of cellular processes such as cell cycle progression and differentiation. S100 genes include at least 13 members which are located as a cluster on chromosome 1q21. This protein differs from the other S100 proteins of known structure in its lack of calcium binding ability in one EF-hand at the N-terminus. The protein is overexpressed in hyperproliferative skin diseases, exhibits antimicrobial activities against bacteria and induces immunomodulatory activities.

For Research Use Only

Toll-free: 1-888-852-8623
Web: www.elabscience.com

Tel: 1-832-243-6086
Email: techsupport@elabscience.com

Fax: 1-832-243-6017

Rev. V1.9