

LYPD3 Polyclonal Antibody

catalog number: E-AB-90983

Note: Centrifuge before opening to ensure complete recovery of vial contents.

Description

Reactivity	Human
Immunogen	Recombinant fusion protein of human LYPD3
Host	Rabbit
Isotype	IgG
Purification	Affinity purification
Buffer	Phosphate buffered solution, pH 7.4, containing 0.05% stabilizer and 50% glycerol.

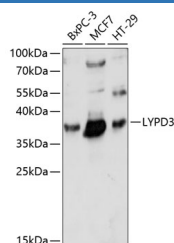
Applications

WB

Recommended Dilution

1:500-1:2000

Data



Western blot analysis of extracts of various cell lines using
LYPD3 Polyclonal Antibody at 1:1000 dilution.

Observed-MV:36 kDa

Calculated-MV:35 kDa

Preparation & Storage

Storage

Store at -20°C Valid for 12 months. Avoid freeze / thaw cycles.

Shipping

The product is shipped with ice pack, upon receipt, store it immediately at the temperature recommended.

Background

Supports cell migration. May be involved in urothelial cell-matrix interactions. May be involved in tumor progression.

For Research Use Only