

Recombinant Human PACSIN1/Syndapin-1 Protein (His Tag)

Catalog Number: PKSH032845

Note: Centrifuge before opening to ensure complete recovery of vial contents.

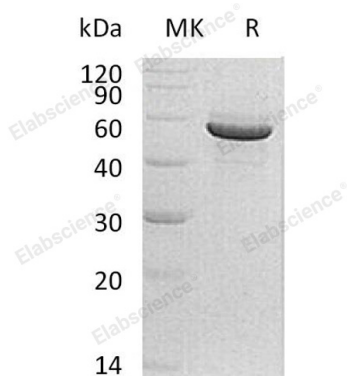
Description

Species	Human
Source	HEK293 Cells-derived Human PACSIN1;Syndapin-1 protein Met 1-Ile444, with an C-terminal His
Calculated MW	52.0 kDa
Observed MW	50-67 kDa
Accession	Q9BY11
Bio-activity	Not validated for activity

Properties

Purity	> 95 % as determined by reducing SDS-PAGE.
Concentration	Subject to label value.
Endotoxin	< 1.0 EU per µg of the protein as determined by the LAL method.
Storage	Store at < -20°C, stable for 6 months. Please minimize freeze-thaw cycles.
Shipping	This product is provided as liquid. It is shipped at frozen temperature with blue ice/gel packs. Upon receipt, store it immediately at < - 20°C.
Formulation	Supplied as a 0.2 µm filtered solution of 20mM PB, 150mM NaCl, pH 7.4.

Data



> 95 % as determined by reducing SDS-PAGE.

Background

Protein Kinase C and Casein Kinase Substrate in Neurons Protein 1 (PACSIN1) belongs to the PACSIN family. PACSIN1 contains one FCH domain and one SH3 domain. PACSIN1 is highly expressed in the brain and at lower levels in the heart, pancreas, and liver. PACSIN1 may play a role in vesicle formation and transport. PACSIN1 has been shown to interact with DNM1, PACSIN3, Huntingtin, and PACSIN2. In addition, PACSIN1 is phosphorylated by casein kinase 2 (CK2) and protein kinase C (PKC).

For Research Use Only

Toll-free: 1-888-852-8623
Web: www.elabscience.com

Tel: 1-832-243-6086
Email: techsupport@elabscience.com

Fax: 1-832-243-6017

Rev. V3.6