

## AF/LE Purified Anti-Mouse CD16/32 Antibody[2.4G2]

**catalog number: E-AB-F09970**

**Note:** Centrifuge before opening to ensure complete recovery of vial contents.

### Description

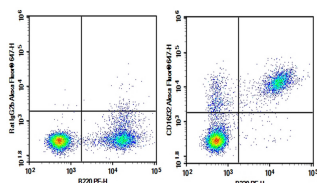
<b>Reactivity</b>	Mouse
<b>Immunogen</b>	Recombinant Mouse CD16/32 protein
<b>Host</b>	Rat
<b>Isotype</b>	Rat IgG2b, $\kappa$
<b>Clone</b>	2.4G2
<b>Purification</b>	>98%, Protein A/G purified
<b>Buffer</b>	Sterile PBS, pH 7.2. < 1.0 EU per mg of the antibody as determined by the LAL method

### Applications

### Recommended Dilution

<b>FCM</b>	2 $\mu\text{g/mL}$ ( $1 \times 10^5$ - $5 \times 10^5$ cells)
------------	---

### Data



C57/BL6 Mouse splenocytes were stained with 0.2  $\mu\text{g}$  AF/LE Purified Anti-Mouse CD16/32 Antibody[2.4G2] (Right) and 0.2  $\mu\text{g}$  Rat IgG2b,  $\kappa$  Isotype Control (Left), followed by Alexa Fluor® 647-conjugated Goat Anti- Rat IgG Secondary Antibody, then anti-Mouse B220 PE-conjugated Monoclonal Antibody.

### Preparation & Storage

<b>Storage</b>	Store at 4°C valid for 12 months or -20°C valid for long term storage, avoid freeze / thaw cycles. This preparation contains no preservatives, thus it should be handled under aseptic conditions.
<b>Shipping</b>	Ice bag

### Background

CD16 is low affinity IgG Fc receptor III (FcR III) and CD32 is FcR II. CD16/CD32 are expressed on B cells, monocytes/macrophages, NK cells, granulocytes, mast cells, and dendritic cells. The Fc receptors bind antibody-antigen immune complexes and mediate adaptive immune responses.

### For Research Use Only