

LDHD Polyclonal Antibody

catalog number: E-AB-18267

Note: Centrifuge before opening to ensure complete recovery of vial contents.

Description

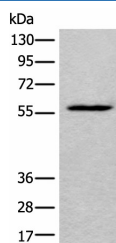
Reactivity	Human
Immunogen	Fusion protein of human LDHD
Host	Rabbit
Isotype	IgG
Purification	Antigen affinity purification
Conjugation	Unconjugated
Buffer	Phosphate buffered solution, pH 7.4, containing 0.05% stabilizer and 50% glycerol.

Applications

Recommended Dilution

WB	1:500-1:2000
-----------	--------------

Data



Western blot analysis of HEPG2 cell lysate using LDHD

Polyclonal Antibody at dilution of 1:400

Observed-MV: Refer to figures

Calculated-MV: 55 kDa

Preparation & Storage

Storage	Store at -20°C Valid for 12 months. Avoid freeze / thaw cycles.
Shipping	The product is shipped with ice pack, upon receipt, store it immediately at the temperature recommended.

Background

LDHD belongs to the D-isomer specific 2-hydroxyacid dehydrogenase family. D-lactate and D-glycerate dehydrogenase activities have been found in a similar protein in yeast. Alternative splicing occurs at this locus and two transcript variants encoding distinct isoforms have been identified.