

## Recombinant Human GFRA2 Protein ((Fc & His Tag)

Catalog Number: PKSH032482

**Note:** Centrifuge before opening to ensure complete recovery of vial contents.

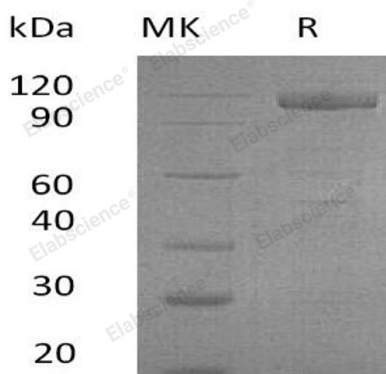
### Description

<b>Species</b>	Human
<b>Source</b>	HEK293 Cells-derived Human GFRA2 protein Ser22-Ser441, with an C-terminal Fc & His
<b>Calculated MW</b>	74.7 kDa
<b>Observed MW</b>	120 kDa
<b>Accession</b>	O00451
<b>Bio-activity</b>	Not validated for activity

### Properties

<b>Purity</b>	> 95 % as determined by reducing SDS-PAGE.
<b>Endotoxin</b>	< 1.0 EU per µg of the protein as determined by the LAL method.
<b>Storage</b>	Generally, lyophilized proteins are stable for up to 12 months when stored at -20 to -80 °C. Reconstituted protein solution can be stored at 4-8°C for 2-7 days. Aliquots of reconstituted samples are stable at < -20°C for 3 months.
<b>Shipping</b>	This product is provided as lyophilized powder which is shipped with ice packs.
<b>Formulation</b>	Lyophilized from a 0.2 µm filtered solution of 20mM Tris-HCl, 150mM NaCl, pH 8.0. Normally 5% - 8% trehalose, mannitol and 0.01% Tween 80 are added as protectants before lyophilization.
	Please refer to the specific buffer information in the printed manual.
<b>Reconstitution</b>	Please refer to the printed manual for detailed information.

### Data



> 95 % as determined by reducing SDS-PAGE.

### Background

GNDF family receptor alpha-2 is a glycosylphosphatidylinositol (GPI)-linked cell surface receptor. It is part of the GDNF receptor family. Glial cell line-derived neurotrophic factor (GDNF) and neurturin (NTN) are two structurally related, potent neurotrophic factors that play key roles in the control of neuron survival and differentiation. GFRA2 mediates the NRTN-induced autophosphorylation and activation of the RET receptor. It also able to mediate GDNF signaling through the RET tyrosine kinase receptor. It acts preferentially as a receptor for NTN compared to its other family member, GDNF family receptor alpha 1.

### For Research Use Only